

e-Catalog 08.2018.0



- > U-Bolt Clamps
- > Band Clamps
- > Strap Clamps
- > Mounting Plates
- > Mounting Plates w/U-Bolts
- > Custom Bent Bolts
- > Custom Brackets
- > Custom Hangers
- > Custom Stampings
- > & More

Quality. Integrity. Expertise. Reliability.



About Us

QUALITY. INTERGITY. EXPERTISE. RELIABILITY.

Since 1957, Clamps Incorporated has been a recognized leader in the exhaust clamps marketplace offering our customers a complete line of exhaust clamp products, u-bolt and band style clamps. Founded with the design, patented and manufacturing of the heavy-duty guillotine style exhaust clamp for used in the heavy-duty truck and off-road equipment markets. Our success is a 100% commitment to a quality systems program. This program assures our customers a quality products with every order.

In addition to our standard products group, we manufacture and distribute nationwide, high quality custom grade bent bolts, wire forms, brackets, hangers and stampings. Clamps Incorporated builds on the tradition by delivering consistent quality, versatile products at a high level of customer service. Our manufacturing diversity make us one of the few one-stop oriented manufacturers who can produce and supply a wide variety of formed metal products, which can keep your cost down, and minimize your vendor base.

Product Description

- Heavy Duty U-Bolt Clamps:** A complete product line of 3/8-16 round and flat U-bolt clamps with guillotine, double edge open end and double edge closed end saddle clamps. Size range from 1.50" to 8.00" depending on style.
- Standard Duty U-Bolt Clamps:** A full product line of standard duty clamps with 5/16-18 round U-bolt clamps with double edge, open end saddle clamps. Size range from 1.13" to 3.00".
- Air Tube U-Bolt Clamps:** A 1/4-20 round U-bolt clamps with double edge, open end saddle. Available in four sizes: .50"; .63"; .75" and 1.00".
- Band Clamps:** Torca® band clamps, preformed, flat and narrow band styles. Single bolt and double bolt installation.
- Strap Clamps:** Five different end connections available in sizes 1.50" to 8.00". All have single bolt for easy installation
- Mounting Plates and U-Bolts:** Slotted mounting plates for 5/16" and 3/8" U-Bolts, for use with U-Bolt sizes from 1.50" to 4.44".
- Custom Bent Bolts:** Wire form bent bolts; round and square J-Bolts; L-Hooks; U-Bolts; Anchor Bolts; Single and Double End Threaded Studs. Available in a wide range of finishes and material options, include 1008 to 1541 mild steel to 304 and 409 stainless steel. Other material and finished available on request. Thread sizes from 0.25 to 0.62 inches. Metric available in M4 to M16.
- Custom Brackets, Hangers & Stampings:** Equipped with 75 to 400 ton press ratings and upholding a (±) 0.015 inch precision tolerance. Progressive and single die stampings for brackets, hangers and mounting rings.

Torca, EasySeal, AccuSeal & TorcTite are registered trademarks of Torca Products, Inc. a Norma Group Company

Quick Look Product Pictorial

U-Bolt Clamps	Band & Strap Clamps	Mounting Plates & U-Bolts	Custom Bent Bolts, Brackets, Hangers & Stamping

We manufacture U.S. customary / standard and metric to customer specifications

Quality Policy

Clamps Incorporated is committed to providing total Customer Satisfaction by understanding our Customer's and Interested Party's needs. This is achieved through Continual Improvement of our Products, Procedures, Employees and Services to our Customers. We attempt to utilize and maximize the value that is available through our Quality Management System.

ISO Certificate of Registration

Certificate of Registration
This certifies that the Quality Management System of
Clamps Incorporated
5960 American Road East
Toledo, Ohio, 43612, United States
has been assessed by NSF-ISR and found to be in conformance to the following standard(s):
ISO 9001:2015
Scope of Registration:
The manufacture of muffler clamps, industrial grade U-bolts, wire forms and stampings for the automotive, heavy-duty truck and off-road equipment markets.
Certificate Number: C0094848-1S4
Certificate Issue Date: 20-APR-2018
Registration Date: 20-APR-2018
Expiration Date: 19-APR-2021
Carl Blazik,
Director, Technical
Operations & Business Units,
NSF-ISR, Ltd.
Page 1 of 2

NSF International Strategic Registrations
789 North Dixboro Road, Ann Arbor, Michigan 48105 | (888) NSF-9000 | www.nsf-isr.org

Authorized Registration and/or Accreditation Mark. This certificate is property of NSF-ISR and must be returned upon request.
*Company is subject for surveillance at regular intervals. To verify registration and/or NSF-ISR status visit our web site at www.nsf-isr.org.

ANNEX PAGE FOR CERTIFICATE REGISTRATION NUMBER
C0094848-1S4
CERTIFICATE ISSUE DATE: 20-APR-2018
CERTIFICATE EXPIRATION DATE: 19-APR-2021
Clamps Incorporated
5960 American Road East
Toledo, Ohio, 43612, United States

Remote Location: Clamps Incorporated-C0207113 9955 Heritage Court Toledo, Michigan, 43612, United States	Scope: Storage, Assembly, Shipping and Receiving
--	--

NSF International Strategic Registrations
789 North Dixboro Road, Ann Arbor, Michigan 48105 | (888) NSF-9000 | www.nsf-isr.org
This Annex is only Valid in connection with the above-mentioned certificate issued by NSF-ISR
Page 2 of 2

Authorized Registration and/or Accreditation Mark. This certificate is property of NSF-ISR and must be returned upon request.
*Company is subject for surveillance at regular intervals. To verify registration and/or NSF-ISR status visit our web site at www.nsf-isr.org.

Quality Policy & Registration

Quality Policy & Registration

Website Information: www.clampsinc.com

The Clamps Incorporated website offers the following:



www.clampsinc.com

RWD

Responsive Web Design

This design provides an optimal viewing and interaction experience-easy reading and navigation with a minimum of resizing, panning, and scrolling-across a wide range of devices from desktop computer monitors, to mobile phones.

[W-L]

is a hyperlink (Web-Link) to www.clampsinc.com web page(s)



• [Home Page \[W-L\]](#)

This section is a quick pictorial guide to the types/styles of clamps and other services offered by Clamps Incorporated.

• [Products \[W-L\]](#)

This section has dimensional specifications of products.

- [3/8" Round U-Bolts Clamps \[W-L\]](#)
- [3/8" Flat U-Bolt Clamps \[W-L\]](#)
- [5/16" Round U-Bolt Clamps \[W-L\]](#)
- [1/4" Round U-Bolt Clamps \[W-L\]](#)
- [Band Clamps \[W-L\]](#)

• Capabilities

This section offers a quick guide to the types and sizes of bent bolts and production machines for custom stampings.

- [Custom Manufactured Bent Bolts \[W-L\]](#)
- [Custom Progressive & Single Die Stampings \[W-L\]](#)

• Valued Added Services

This section offers the type of packaging, printing and bar coding available. The resources section offers PDF downloads for the following:

► [Technical Information \[W-L\]](#)

- [Guidelines for U-Bolt Design \[W-L\]](#) (PDF Download)
- [ClampTech Newsletters \[W-L\]](#) (PDF Downloads)

► [Legal & Policies \[W-L\]](#)

- [Quality Policy \[W-L\]](#) (PDF Download)
- [Limited Warranty \[W-L\]](#) (PDF Download)
- [Web Privacy Policy \[W-L\]](#) (PDF Download)
- [Sellers Terms of Sale \[W-L\]](#) (PDF Download)
- [Confidentiality / Non Disclosure Statement \[W-L\]](#) (PDF Download)

► [Other \[W-L\]](#)

- [Clamps QC Survey \[W-L\]](#) (PDF Download)
- [RoHS2 Compliance Statement \[W-L\]](#) (PDF Download)
- [DRC Conflict Material Statement \[W-L\]](#) (PDF Download)
- [REACH Statement \[W-L\]](#) (PDF Download)
- [Complying with Made in USA Standard \(FTC Publication\) \[W-L\]](#) (PDF Download)
- [Enforcement Policy of U.S. Origin Claims \(FTC Publication\) \[W-L\]](#) (PDF Download)

► [Custom Packaging, Printing & Bar Coding Labeling \[W-L\]](#)

► [QC Survey \[W-L\]](#) (On-Line Survey)

• [Fastener Industry Links \[W-L\]](#)

This section offers industry links to quality standard and other industry organizations websites.

• [Request Information \[W-L\]](#)

To request information, please submit the information requested on this form. Typical respond is within one working day after it's receipt.

• [About Us \[W-L\]](#)

This section is a brief history of Clamps Incorporated.

• [Contact Us \[W-L\]](#)

This section shows names, titles / job functions, phone and email address of administrative personal at Clamps incorporated and offers directions to our location in Toledo, OH

Index

Contents	Description	PDF Page #
----------	-------------	---------------

Products:

U-Bolt Clamps		
U-Series:	Single Edge, Guillotine Saddle, 3/8-16 Round U-Bolt & (2) Serrated Flange Nuts	7
UDO Series:	Double Edge, Open End Saddle, 3/18-16 Round U-Bolt & (2) Serrated Flange Nuts	9
UD Series:	Double Edge, Closed End Saddle, 3/18-16 Round U-Bolt & (2) Serrated Flange Nuts	11
PC Series:	Double Edge, Open End Saddle, 5/16-18 Round U-Bolt & (2) Hex Nuts	14
AC Series:	Double Edge, Open End Saddle, 1/4-20 Round U-Bolt & (2) Hex Nuts	15
Flat U-Bolt Clamps		
UF Series:	Single Edge, Guillotine Saddle, 3/8-16 Flat U-Bolt & (2) Serrated Flange Nuts	8
UFDO Series:	Double Edge, Open End Saddle, 3/18-16 Flat U-Bolt & (2) Serrated Flange Nuts	10
UFD Series:	Double Edge, Closed End Saddle, 3/18-16 Flat U-Bolt & (2) Serrated Flange Nuts	12
AUF Series:	Cast Aluminum Saddle, 3/18-16 Flat U-Bolt & (2) Serrated Flange Nuts	13
Torca® Band Clamps		
EasySeal, AccuSeal & TorcTite are registered trademarks of Torca Products, Inc. a Norma Group Company		
EBC Series:	Torca EasySeal® Flat Band Clamps	16
NBC Series:	Torca AccuSeal® Narrow Band Clamps	16
PFC Series:	Torca TorcTite® Preformed Lap Joint Clamps	16
Strap Clamps		
BCA Series:	S-Bend Connect Loop Clamps	17
BCB Series:	S-Bend Connect Round Clamps	18
BCC Series:	Double S-Bend Connect Round Clamps	19
BCD Series:	Ear End Connect Round Clamps	20
BCE Series:	Clip End Connect Round Clamps	21
Mounting Plates & Mounting Plates with U-Bolt		
MP Series:	Mounting Plates	22
MBP Series:	Mounting Plates with 5/16"- 18 Threaded U-Bolts	23
MPB Series:	Mounting Plates with 3/8"- 16 Threaded U-Bolts	24
Hardware		
HN; LW Series:	Hex Nuts, Serrated Flange Nuts & Lock Washers	25
U-Bolts Only		
UBA & UB Series:	Round U-Bolts, 1/4-20, 5/16-18 and 3/8-16 Thread	26
UBF Series:	Flat U-Bolts, 3/8-16 Thread	27
Saddles Only		
S Series:	Guillotine Saddles	28
SD Series:	HD Double Edge, Closed End Saddles	29
SAC & SDO Series:	HD Double Edge, Open End Saddles	30
PCS Series:	Standard Duty, Double Edge, Open End Saddles	31
S Series:	7" & 8" Aluminum Saddles	32

Custom Made Products:

Custom Bent Bolts	
Custom Made Bent Bolts	33 - 34
Custom Brackets, Hangers & Stampings	
Custom Made Brackets, Hangers & Stampings	35

Information:



Other Information		
About Us	Inside Front Cover	2
Administration	Inside Back Cover	45
Catalog Corrections & Changes		43
How To Order Example		37
Knurling of coined/flat U-bolts Information	Inside Back Cover	45
Pictorial Index		6
Product Options		36
Quality Policy & ISO Certificate of Registration		3
Sellers Terms & Conditions of Sale		38 - 41
Warranty		42
Web Page Info		4

Pictorial Index



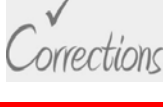







Products:

U Series  PDF Page 7	UF Series  PDF Page 8	UDO Series  PDF Page 9	UFDO Series  PDF Page 10	UD Series  PDF Page 11
UDF Series  PDF Page 12	AUF Series  PDF Page 13	PC Series  PDF Page 14	AC Series  PDF Page 15	Torca Clamps  PDF Page 16
BCA; BCB; BCC; & BCD Series  PDF Pages 17 - 20	BCE Series  PDF Page 21	Mounting Plates  PDF Page 22	MPB w/U-Bolts  With 5/16" & 3/8" U-Bolts PDF Pages 23 & 24	
HN & LW Series  PDF Page 25	UBA & UB Series  PDF Pages 26	UBF Series  PDF Pages 27	S; SD; SDO; SAC; SD; PCS Series  PDF Pages 28 - 32	

Custom Made Products:

Custom U-Bent Bolts  PDF Pages 33 - 34	Custom Brackets, Hangers & Stamping  PDF Page 35
--	---

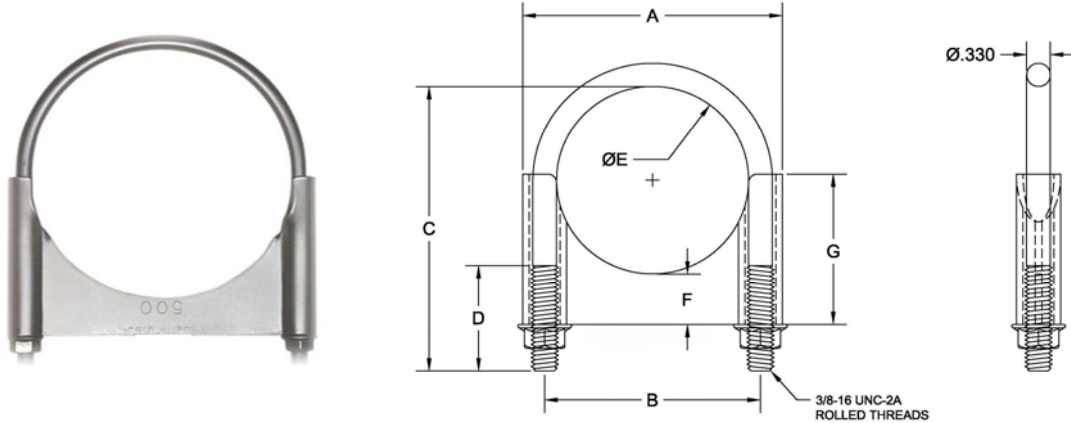
Information:

About Us  PDF Page 2	Administration  PDF Page 45	Correction  PDF Page 43	How to Order  PDF Page 37	Index  PDF Page 5
Product Options  PDF Page 36	Quality  PDF Page 3	Terms  PDF Pages 38 - 41	Warranty  PDF Page 42	Website Info  PDF Page 4

U Series - U-Bolt Clamps

Single Edge, Guillotine Saddle, 3/8-16 Round U-Bolt and (2) Serrated Flange Nuts

Made in the U.S.A



U Series Clamps Includes: 3/8-16 Round U-Bolt, Single Edge, Guillotine Saddle and (2) Serrated Flange Nuts

Size (Inches)	Basic Part Number	A	B	C	D	øE	F	G		Saddle Material Gauge	Weight Each (Lbs.)
Inches											
2.00	U200	3.10	2.50	3.67	1.50	2.17	0.69	1.89		13	0.45
2.25	U225	3.35	2.75	3.79	1.50	2.42	0.69	2.00		13	0.50
2.50	U250	3.61	3.00	4.05	1.50	2.67	0.72	2.14		13	0.53
2.75	U275	3.86	3.25	4.29	1.50	2.92	0.69	2.25		13	0.56
3.00	U300	4.11	3.50	4.54	1.50	3.17	0.66	2.37		13	0.60
3.25	U325	4.34	3.75	4.79	1.50	3.42	0.69	2.50		13	0.65
3.50	U350	4.61	4.00	5.04	1.50	3.67	0.68	2.69		13	0.72
3.88	U378	4.91	4.25	5.17	1.50	3.92	0.69	2.75		11	0.90
4.00	U400	5.14	4.50	5.85	1.50	4.17	0.70	2.91		13	0.82
4.44	U476	5.49	4.81	5.85	1.50	4.48	0.87	3.24		11	1.09
4.50	U450	5.61	5.00	6.17	1.50	4.67	0.73	3.22		11	1.11
5.00	U500	6.19	5.50	6.79	1.50	5.17	0.78	3.37		11	1.24
5.50	U550	6.67	6.00	7.10	1.50	5.67	0.67	2.49		11	1.14
6.00	U600	7.18	6.50	7.48	1.50	6.17	0.80	2.62		11	1.24

Note: We reserve the right to change specifications and/or designs without prior notice or obligation.

Tolerances: 2 Pl. Dec. ± 0.060
3 Pl. Dec. ± 0.030

Material: U-Bolt - C1018 - 3/8-16 UNC-2A Threads
Saddle - C1008-1010-H.R.P.O.
Nuts - Serrated Flanged, Grade 2

Optional Material: 304 Stainless Steel

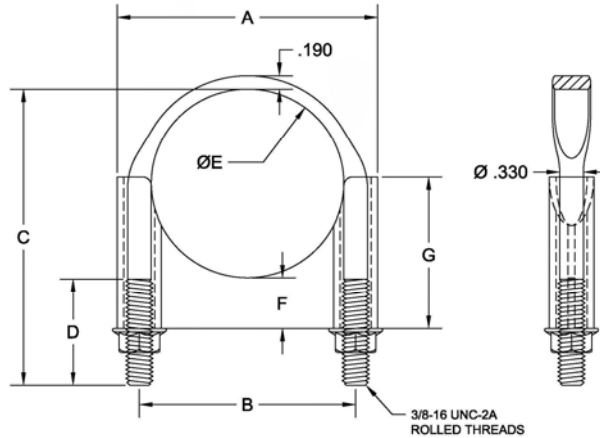
Standard Packs: ● Bulk / Unassembled ● Assembled / Bulk ● Packaged / Bulk / Individual Poly Bag
● Ten Pack Packaged / Individual Poly Bag ● Fifty Pack Packaged / Individual Poly Bag
● Other Packs Available on Request

Optional Finishes: ● Plain ● Clear Zinc ● Yellow Zinc ● Black Zinc ● Black Paint ● Chrome ● To You Specifications

UF Series - Flat U-Bolt Clamps

Single Edge, Guillotine Saddle, 3/8-16 Flat U-Bolt and (2) Serrated Flange Nuts

Made in the U.S.A



UF Series Clamps Includes: 3/8-16 Round U-Bolt, Single Edge, Guillotine Saddle and (2) Serrated Flange Nuts

Size (Inches)	Basic Part Number	A	B	C	D	ØE	F	G		Saddle Material Gauge	Weight Each (Lbs.)
Inches											
2.00	UF200	3.10	2.50	3.81	1.50	2.17	0.69	1.89		13	0.45
2.25	UF225	3.35	2.75	3.94	1.50	2.42	0.69	2.00		13	0.50
2.50	UF250	3.61	3.00	4.19	1.50	2.67	0.72	2.14		13	0.53
2.75	UF275	3.86	3.25	4.36	1.50	2.92	0.69	2.25		13	0.56
3.00	UF300	4.11	3.50	4.54	1.50	3.17	0.66	2.37		13	0.60
3.25	UF325	4.34	3.75	4.79	1.50	3.42	0.69	2.50		13	0.65
3.50	UF350	4.61	4.00	5.04	1.50	3.67	0.68	2.69		13	0.72
4.00	UF400	5.14	4.50	5.85	1.75	4.17	0.70	2.91		13	0.82
4.50	UF450	5.61	5.00	6.31	1.50	4.67	0.73	3.22		11	1.11
5.00	UF500	6.19	5.50	6.79	1.75	5.17	0.78	3.37		11	1.24
5.50	UF550	6.67	6.00	7.10	1.50	5.67	0.67	2.49		11	1.14
6.00	UF600	7.18	6.50	7.71	1.50	6.17	0.80	2.62		11	1.24

Note: We reserve the right to change specifications and/or designs without prior notice or obligation.

Tolerances: 2 Pl. Dec. ± 0.060
3 Pl. Dec. ± 0.030

Material: U-Bolt - C1018 - 3/8-16 UNC-2A Threads
Saddle - C1008-1010-H.R.P.O.
Nuts - Serrated Flanged, Grade 2

Optional Material: 304 Stainless Steel

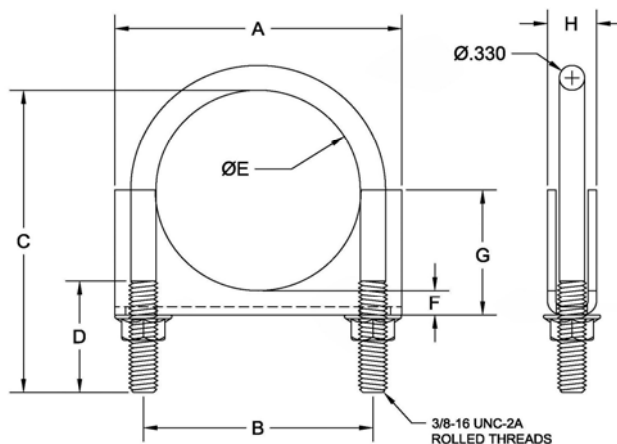
Standard Packs: ●Bulk / Unassembled ●Assembled / Bulk ●Packaged / Bulk / Individual Poly Bag
●Ten Pack Packaged / Individual Poly Bag ●Fifty Pack Packaged / Individual Poly Bag
●Other Packs Available on Request

Optional Finishes: ●Plain ●Clear Zinc ●Yellow Zinc ●Black Zinc ●Black Paint ●Chrome ●To You Specifications

UDO Series - U-Bolt Clamps

Double Edge, Open End Saddle, 3/8-16 Round U-Bolt and (2) Serrated Flange Nuts

Made in the U.S.A



UDO Series Clamps Includes: 3/8-16 Round U-Bolt, Double Edge, Open End Saddle and (2) Serrated Flange Nuts

Size (Inches)	Basic Part Number	A	B	C	D	ØE	F	G	H	Saddle Material Gauge	Weight Each (Lbs.)
Inches											
1.50	UDO150	2.88	2.06	2.43	1.00	1.73	0.31	1.17	0.80	11	0.31
1.63	UDO163	2.88	2.12	2.64	1.00	1.79	0.31	1.17	0.80	11	0.33
1.75	UDO175	3.06	2.31	2.81	1.50	1.98	0.33	1.30	0.64	11	0.34
1.88	UDO188	3.19	2.44	2.92	1.50	2.11	0.31	1.36	0.64	11	0.38
2.00	UDO200	3.25	2.50	3.67	1.50	2.17	0.31	1.42	0.64	11	0.41
2.13	UDO213	3.50	2.68	3.72	1.50	2.30	0.37	1.54	0.64	11	0.43
2.25	UDO225	3.50	2.75	3.79	1.50	2.42	0.32	1.55	0.64	11	0.46
2.50	UDO250	3.75	3.00	4.05	1.50	2.67	0.33	1.68	0.64	11	0.50
2.75	UDO275	4.13	3.31	4.29	1.50	2.92	0.32	1.79	0.82	11	0.57
3.00	UDO300	4.38	3.50	4.54	1.50	3.17	0.30	1.90	0.82	11	0.63
3.25	UDO325	4.50	3.75	4.79	1.50	3.42	0.41	2.13	0.82	11	0.72
3.50	UDO350	4.88	4.00	5.04	1.50	3.67	0.56	2.40	0.82	11	0.82
4.00	UDO400	5.38	4.50	5.85	1.50	4.17	0.53	2.50	0.83	11	0.91
4.50	UDO450	6.11	5.00	6.17	1.50	4.67	0.65	2.86	0.83	11	1.10
5.00	UDO500	6.37	5.50	6.79	1.50	5.17	0.53	3.12	0.83	11	1.13
5.50	UDO550	7.25	6.00	7.10	1.50	5.67	0.58	3.32	1.00	11	1.22
6.00	UDO600	7.75	6.50	7.48	1.50	6.17	0.60	3.68	1.00	11	1.35
7.00	UDO700	8.75	7.50	8.53	1.50	7.17	0.60	4.18	1.00	11	1.75
8.00	UDO800	9.75	8.50	9.69	1.75	8.17	0.60	4.69	1.00	11	2.06

Note: We reserve the right to change specifications and/or designs without prior notice or obligation.

Tolerances: 2 Pl. Dec. ± 0.060
3 Pl. Dec. ± 0.030

Material: U-Bolt - C1018 - 3/8-16 UNC-2A Threads
Saddle - C1008-1010-H.R.P.O.
Nuts - Serrated Flanged, Grade 2

Optional Material: 304 Stainless Steel

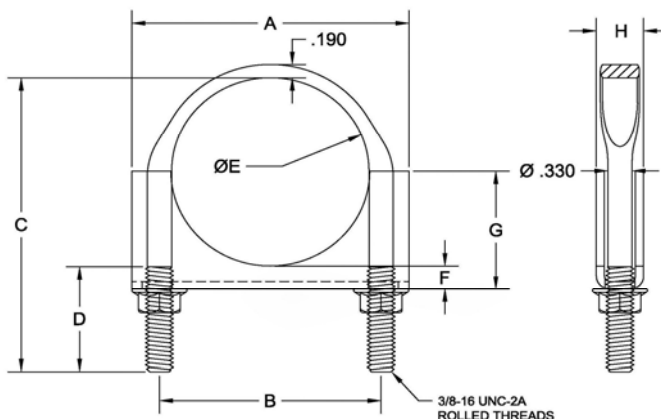
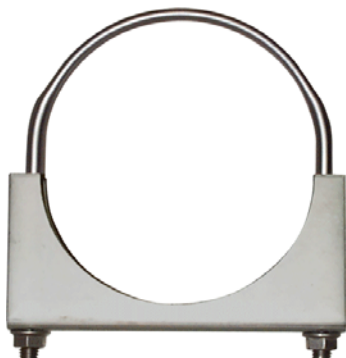
Standard Packs: ● Bulk / Unassembled ● Assembled / Bulk ● Packaged / Bulk / Individual Poly Bag
● Ten Pack Packaged / Individual Poly Bag ● Fifty Pack Packaged / Individual Poly Bag
● Other Packs Available on Request

Optional Finishes: ● Plain ● Clear Zinc ● Yellow Zinc ● Black Zinc ● Black Paint ● Chrome ● To You Specifications

UFDO Series - Flat U-Bolt Clamps

Double Edge, Open End Saddle, 3/8-16 Flat U-Bolt and (2) Serrated Flange Nuts

Made in the U.S.A



UFDO Series Clamps Includes: 3/8-16 Flat U-Bolt, Double Edge, Open End Saddle and (2) Serrated Flange Nuts

Size (Inches)	Basic Part Number	A	B	C	D	ØE	F	G	H	Saddle Material Gauge	Weight Each (Lbs.)
Inches											
2.00	UFDO200	3.25	2.50	3.82	1.50	2.17	0.31	1.42	0.64	11	0.41
2.25	UFDO225	3.50	2.75	3.94	1.50	2.42	0.32	1.55	0.64	11	0.46
2.50	UFDO250	3.75	3.00	4.19	1.50	2.67	0.33	1.68	0.64	11	0.50
2.75	UFDO275	4.13	3.31	4.36	1.50	2.92	0.32	1.79	0.82	11	0.57
3.00	UFDO300	4.38	3.50	4.54	1.50	3.17	0.30	1.90	0.82	11	0.63
3.50	UFDO350	4.88	4.00	5.04	1.50	3.67	0.56	2.40	0.82	11	0.82
4.00	UFDO400	5.38	4.50	5.85	1.75	4.17	0.53	2.50	0.83	11	0.91
5.00	UFDO500	6.37	5.50	6.79	1.75	5.17	0.53	3.12	0.83	11	1.13
6.00	UFDO600	7.75	6.50	7.71	1.50	6.17	0.58	3.68	1.00	11	1.35
7.00	UFDO700	8.75	7.50	8.53	1.50	7.17	0.60	4.18	1.00	11	1.75
8.00	UFDO800	9.75	8.50	9.69	1.50	8.17	0.60	4.69	1.00	11	2.06

Note: We reserve the right to change specifications and/or designs without prior notice or obligation.

Tolerances: 2 Pl. Dec. ± 0.060
3 Pl. Dec. ± 0.030

Material: U-Bolt - C1018 - 3/8-16 UNC-2A Threads
Saddle - C1008-1010-H.R.P.O.
Nuts - Serrated Flanged, Grade 2

Optional Material: 304 Stainless Steel

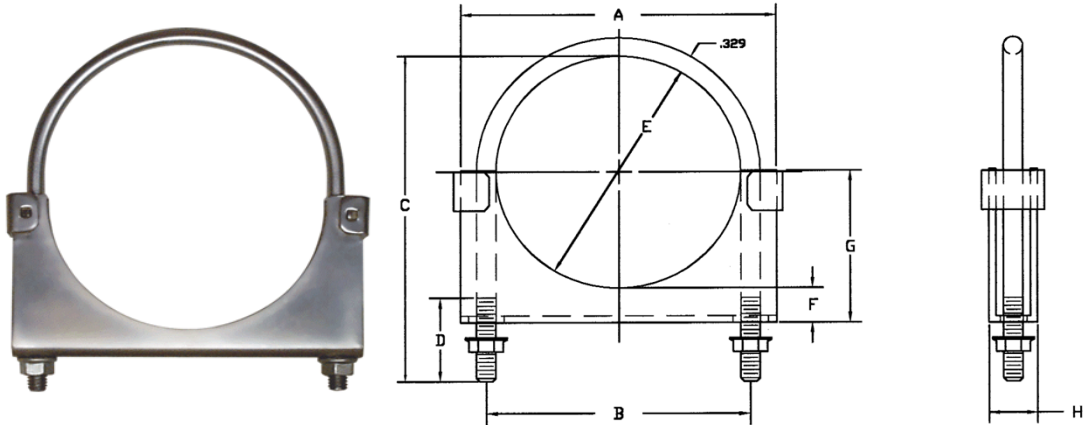
Standard Packs: ● Bulk / Unassembled ● Assembled / Bulk ● Packaged / Bulk / Individual Poly Bag
● Ten Pack Packaged / Individual Poly Bag ● Fifty Pack Packaged / Individual Poly Bag
● Other Packs Available on Request

Optional Finishes: ● Plain ● Clear Zinc ● Yellow Zinc ● Black Zinc ● Black Paint ● Chrome ● To You Specifications

UD Series - U-Bolt Clamps

Double Edge, Closed End Saddle, 3/8-16 Round U-Bolt and (2) Serrated Flange Nuts

Made in the U.S.A



UD Series Clamps Includes: 3/8-16 Round U-Bolt, Double Edge, Closed End Saddle and (2) Serrated Flange Nuts

Size (Inches)	Basic Part Number	A	B	C	D	E	F	G	H	Saddle Material Gauge	Weight Each (Lbs.)
Inches											
3.00	UD300	4.38	3.50	5.54	1.50	3.17	0.30	1.90	0.82	11	0.71
3.25	UD325	4.50	3.75	4.79	1.50	3.42	0.41	2.12	0.82	11	0.81
3.50	UD350	4.88	4.00	5.04	1.50	3.67	0.56	2.40	0.82	11	0.89
4.00	UD400	5.38	4.50	5.85	1.50	4.17	0.53	2.50	0.83	11	0.98
4.50	UD450	6.12	5.00	6.17	1.50	4.37	0.72	3.02	0.83	11	1.18
5.00	UD500	6.37	5.50	6.79	1.50	5.17	0.53	3.12	0.83	11	1.22
5.50	UD550	7.25	6.00	7.10	1.50	5.67	0.58	3.32	1.00	11	1.36
6.00	UD600	7.75	6.50	7.48	1.50	6.17	0.58	3.68	1.00	11	1.50

Note: We reserve the right to change specifications and/or designs without prior notice or obligation.

Tolerances: 2 Pl. Dec. ± 0.060
3 Pl. Dec. ± 0.030

Material: U-Bolt - C1018 - 3/8-16 UNC-2A Threads
Saddle - C1008-1010-H.R.P.O.
Nuts - Serrated Flanged, Grade 2

Optional Material: 304 Stainless Steel

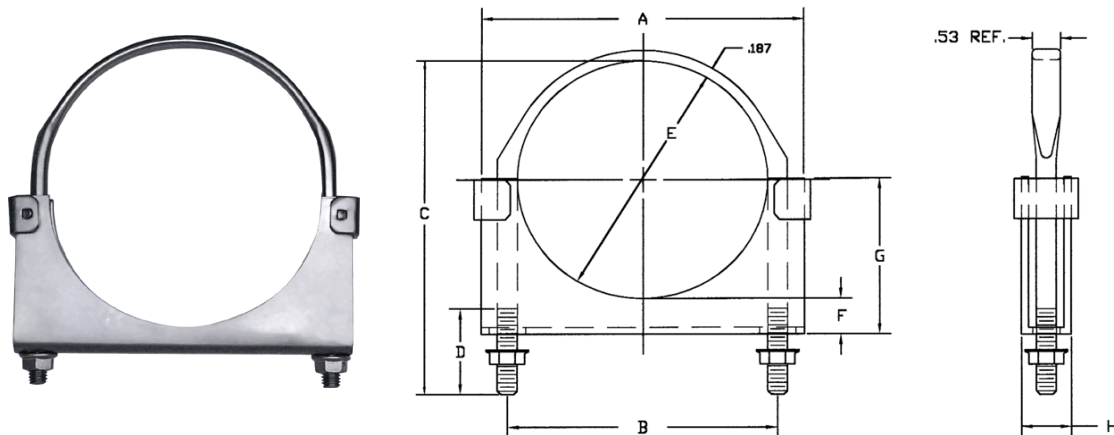
Standard Packs: ● Bulk / Unassembled ● Assembled / Bulk ● Packaged / Bulk / Individual Poly Bag
● Ten Pack Packaged / Individual Poly Bag ● Fifty Pack Packaged / Individual Poly Bag
● Other Packs Available on Request

Optional Finishes: ● Plain ● Clear Zinc ● Yellow Zinc ● Black Zinc ● Black Paint ● Chrome ● To You Specifications

UFD Series - Flat U-Bolt Clamps

Double Edge, Closed End Saddle, 3/8-16 Flat U-Bolt and (2) Serrated Flange Nuts

Made in the U.S.A



UFD Series Clamps Includes: 3/8-16 Flat U-Bolt, Double Edge, Closed End Saddle and (2) Serrated Flange Nuts

Size (Inches)	Basic Part Number	A	B	C	D	E	F	G	H	Saddle Material Gauge	Weight Each (Lbs.)
Inches											
3.00	UFD300	4.38	3.50	4.54	1.50	3.17	0.30	1.90	0.82	11	0.71
3.50	UFD350	4.88	4.00	5.04	1.50	3.67	0.56	2.40	0.82	11	0.89
4.00	UFD400	5.38	4.50	5.85	1.75	4.17	0.53	2.50	0.83	11	0.98
4.50	UFD450	6.25	5.00	6.31	1.50	4.17	0.72	3.02	0.83	11	1.18
5.00	UFD500	6.37	5.50	6.79	1.75	5.17	0.53	3.12	0.83	11	1.22
5.50	UFD550	7.25	6.00	7.10	1.50	5.67	0.58	3.37	1.03	11	1.36
6.00	UFD600	7.75	6.50	7.71	1.50	6.17	0.58	3.68	1.00	11	1.50

Note: We reserve the right to change specifications and/or designs without prior notice or obligation.

Tolerances: 2 Pl. Dec. ± 0.060
3 Pl. Dec. ± 0.030

Material: U-Bolt - C1018 - 3/8-16 UNC-2A Threads
Saddle - C1008-1010-H.R.P.O.
Nuts - Serrated Flanged, Grade 2

Optional Material: 304 Stainless Steel

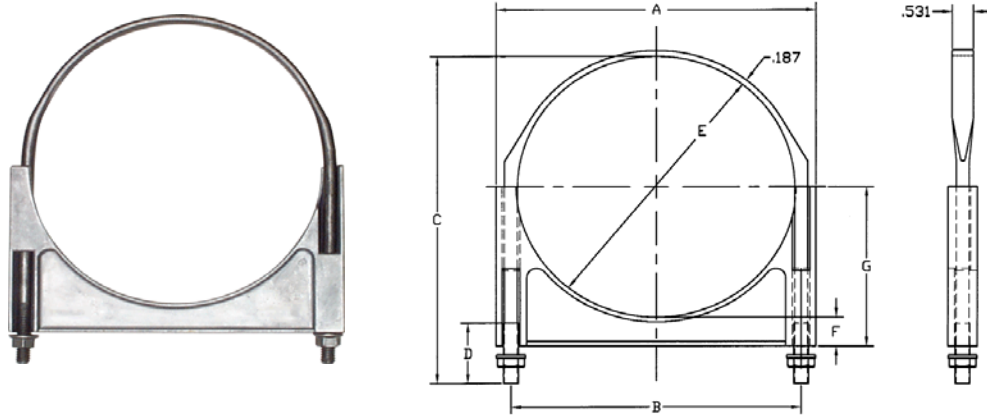
Standard Packs: ● Bulk / Unassembled ● Assembled / Bulk ● Packaged / Bulk / Individual Poly Bag
● Ten Pack Packaged / Individual Poly Bag ● Fifty Pack Packaged / Individual Poly Bag
● Other Packs Available on Request

Optional Finishes: ● Plain ● Clear Zinc ● Yellow Zinc ● Black Zinc ● Black Paint ● Chrome ● To You Specifications

AUF Series - Flat U-Bolt Clamps

Heavy Duty Cast Aluminum Saddle, 3/8-16 Flat U-Bolt and (2) Serrated Flange Nuts

Saddle Made in China U-Bolt Made in U.S.A



AUF Series Clamps Includes: 3/8-16 Flat U-Bolt, Heavy Duty Cast Aluminum Saddle and (2) Serrated Flange Nuts

Size (Inches)	Basic Part Number	A	B	C	D	E	F	G	H	Saddle Material Gauge	Weight Each (Lbs.)
Inches											
7.00	AUF700	8.12	7.50	8.83	1.50	7.10	0.75	4.25	0.75	NA	1.02
8.00	AUF800	9.12	8.50	9.69	1.50	8.10	0.75	4.25	0.75	NA	1.10

Note: We reserve the right to change specifications and/or designs without prior notice or obligation.

Tolerances: 2 Pl. Dec. ± 0.060
3 Pl. Dec. ± 0.030

Material: U-Bolt - C1018 - 3/8-16 UNC-2A Threads
Saddle - Cast Aluminum
Nuts - Serrated Flanged, Grade 2

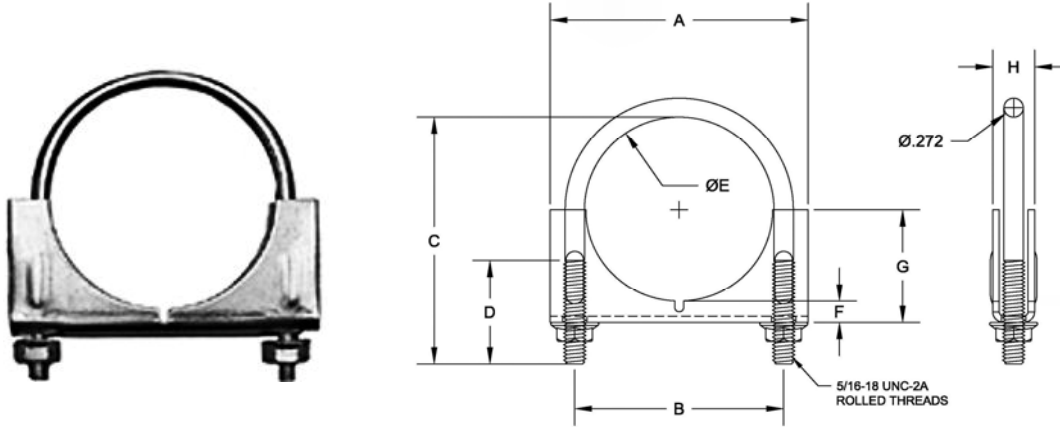
Standard Packs: ●Bulk / Unassembled ●Assembled / Bulk ●Packaged / Bulk / Individual Poly Bag
●Ten Pack Packaged / Individual Poly Bag ●Fifty Pack Packaged / Individual Poly Bag
●Other Packs Available on Request

Optional Finishes: ●Plain ●Clear Zinc ●Yellow Zinc ●Black Zinc ●Black Paint ●Chrome ●To You Specifications (for U-Bolt)

PC Series - U-Bolt Clamps

Double Edge, Open End Saddle, 5/16-18 Round U-Bolt and (2) Hex Nuts

Made in the U.S.A



PC Series Clamps Includes: 5/16-18 Round U-Bolt, Double Edge, Open End Saddle and (2) Hex Nuts

Size (Inches)	Basic Part Number	A	B	C	D	ØE	F	G	H	Saddle Material Gauge	Weight Each (Lbs.)
Inches											
*1.13	PC113	2.31	1.63	2.03	1.00	1.36	0.26	0.93	0.56	13	0.19
*1.25	PC125	2.44	1.75	2.12	1.00	1.48	0.26	0.99	0.56	13	0.23
*1.38	PC138	2.56	1.88	2.27	1.00	1.61	0.26	1.05	0.56	13	0.25
1.50	PC150	2.69	1.94	2.47	1.00	1.67	0.34	1.16	0.59	13	0.28
1.63	PC163	2.88	2.06	2.54	1.00	1.79	0.30	1.19	0.59	13	0.29
1.75	PC175	2.88	2.19	2.87	1.00	1.92	0.31	1.25	0.59	13	0.31
1.88	PC188	3.00	2.31	2.90	1.00	2.04	0.31	1.31	0.59	13	0.32
2.00	PC200	3.13	2.44	3.06	1.00	2.17	0.27	1.36	0.59	13	0.34
2.13	PC213	3.38	2.56	3.12	1.00	2.23	0.38	1.51	0.59	13	0.35
2.25	PC225	3.38	2.69	3.31	1.00	2.42	0.31	1.50	0.59	13	0.36
2.50	PC250	3.63	2.94	3.56	1.25	2.67	0.31	1.63	0.59	13	0.40
*2.75	PC275	4.13	3.31	4.35	1.25	2.92	0.32	1.80	0.82	13	0.48
*3.00	PC300	4.38	3.56	4.60	1.50	3.17	0.30	1.90	0.82	13	0.62

* No notch or stiffening ribs on these sizes

Note: We reserve the right to change specifications and/or designs without prior notice or obligation.

Tolerances: 2 Pl. Dec. ± 0.060
3 Pl. Dec. ± 0.030

Material: U-Bolt - C1018 - 5/16-18 UNC-2A Threads
Saddle - C1008- 1010-H.R.P.O.
Nuts - Hex Head

Optional Material: 304 Stainless Steel

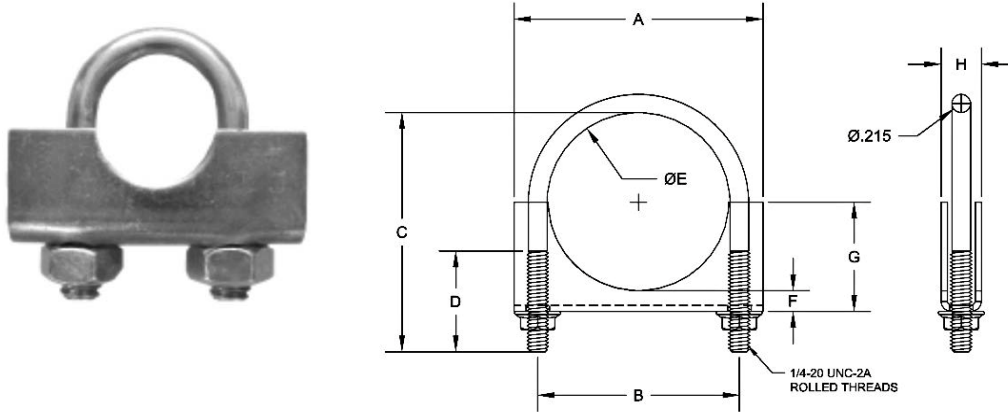
Standard Packs: ●Bulk / Unassembled ●Assembled / Bulk ●Packaged / Bulk / Individual Poly Bag
●Ten Pack Packaged / Individual Poly Bag ●Fifty Pack Packaged / Individual Poly Bag
●Other Packs Available on Request

Optional Finishes: ●Plain ●Clear Zinc ●Yellow Zinc ●Black Zinc ●Black Paint ●Chrome ●To You Specifications

AC Series - U-Bolt Clamps

Double Edge, Open End Saddle, 1/4-20 Round U-Bolt and (2) Hex Nuts

Made in the U.S.A



AC Series Clamps Includes: 1/4-20 Round U-Bolt, Double Edge, Open End Saddle and (2) Hex Nuts

Size (Inches)	Basic Part Number	A	B	C	D	ØE	F	G	H	Saddle Material Gauge	Weight Each (Lbs.)
Inches											
0.50	AC050	1.56	0.81	1.45	0.75	0.59	0.33	0.62	0.46	13	0.14
0.63	AC063	1.56	1.00	1.45	0.75	0.67	0.29	0.62	0.46	13	0.14
0.75	AC075	1.56	1.08	1.45	0.75	0.85	0.20	0.62	0.40	13	0.14
1.00	AC100	1.82	1.34	1.50	0.75	1.12	0.20	0.76	0.46	13	0.16

Note: We reserve the right to change specifications and/or designs without prior notice or obligation.

Tolerances: 2 Pl. Dec. ± 0.060

Material: U-Bolt - C1018 - 1/4-20 UNC-2A Threads
Saddle - C1008 - 1010-H.R.P.O.
Nuts - Hex Head

Optional Material: 304 Stainless Steel

Standard Packs: ●Bulk / Unassembled ●Assembled / Bulk ●Packaged / Bulk / Individual Poly Bag
●Ten Pack Packaged / Individual Poly Bag ●Fifty Pack Packaged / Individual Poly Bag
●Other Packs Available on Request

Optional Finishes: ●Plain ●Yellow Zinc ●To Your Specifications

Torca® Series - Band Clamps

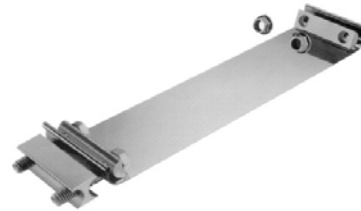
- EBC Series
 - NBC Series
 - PFC Series
- Torca EasySeal® Flat Band Clamps
 Torca AccuSeal® Narrow Band Clamps
 Torca TorcTite® Preformed Lap Joint Clamps

Torca, EasySeal, AccuSeal & TorcTite are registered trademarks of Torca Products, Inc. a Norma Group Company

EBC Series:

Made In U.S.A

Size (Inches)	Part Number	Weight Each (Lbs.)
2.00	EBC200	0.80
2.25	EBC225	0.82
2.50	EBC250	0.83
2.75	EBC275	0.84
3.00	EBC300	0.85
3.50	EBC350	0.87
4.00	EBC400	0.90
4.50	EBC450	0.92
5.00	EBC500	0.95
6.00	EBC600	0.99



- Flat Band Clamp
- Factory Attached Hardware
- Double Bolt Installation
- Forms To Application
- 304 Polished Stainless Steel Band

NBC Series:

Made In U.S.A

Size (Inches)	Part Number	Weight Each (Lbs.)
1.75	NBC175	0.41
2.00	NBC200	0.43
2.25	NBC225	0.45
2.50	NBC250	0.47
2.75	NBC275	0.50
3.00	NBC300	0.52
3.50	NBC350	0.55
4.00	NBC400	0.59
5.00	NBC500	0.67
6.00	NBC600	0.75



- Narrow Band Clamp
- Preformed For Application
- Factory Attached Hardware
- Single Bolt Installation
- 430 Bright Stainless Steel Band

PFC Series:

Made In U.S.A

Size (Inches)	Stainless Steel Part Number	Aluminized Steel Part Number	Weight Each (Lbs.)
2.00	PFC200	NA	0.80
2.25	PFC225	NA	0.81
2.50	PFC250	NA	0.82
2.75	PFC275	NA	0.83
3.00	PFC300	NA	0.85
3.50	PFC350	PFC350ALZ	0.87
4.00	PFC400	PFC400ALZ	0.89
4.50	PFC450	NA	0.89
5.00	PFC500	PFC500ALZ	0.94
6.00	PFC600	PFC600ALZ	0.99



- Preformed Lap Joint Clamp
- Factory Attached Hardware
- Double Bolt Installation
- 304 Polished Stainless Steel Band
- Available In Aluminized Steel

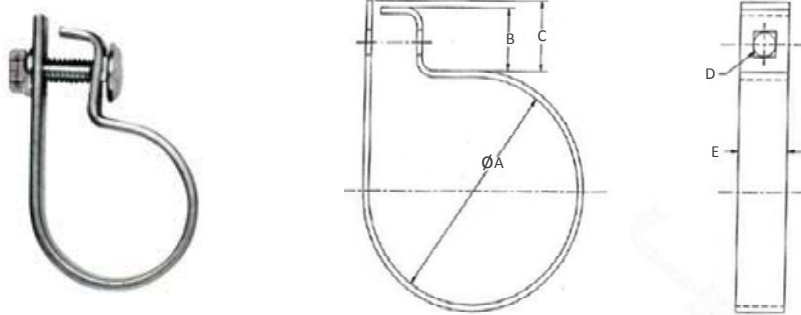
Note: We reserve the right to change specifications and/or designs without prior notice or obligation.

08-2018

BCA Series - Strap Clamps

Made in U.S.A.

J Style with S Bend Connection



Size (Inches)	Basic Part Number	ØA	B	C	D	E	Weight Each (Lbs.)
Inches							
1.50	BCA150	1.50	1.00	1.12	0.50	1.00	0.40
1.63	BCA158	1.63	1.00	1.12	0.50	1.00	0.42
1.75	BCA175	1.75	1.00	1.12	0.50	1.00	0.43
1.88	BCA188	1.88	1.00	1.12	0.50	1.00	0.44
2.00	BCA200	2.00	1.00	1.12	0.50	1.00	0.46
2.13	BCA213	2.13	1.00	1.12	0.50	1.00	0.47
2.25	BCA225	2.25	1.00	1.12	0.50	1.00	0.48
2.50	BCA250	2.50	1.00	1.12	0.50	1.00	0.51
2.75	BCA275	2.75	1.00	1.12	0.50	1.00	0.54
3.00	BCA300	3.00	1.00	1.12	0.50	1.00	0.56
3.25	BCA325	3.25	1.00	1.12	0.50	1.00	0.59
3.50	BCA350	3.50	1.00	1.12	0.50	1.00	0.62
3.88	BCA388	3.88	1.00	1.12	0.50	1.00	0.66
4.00	BCA400	4.00	1.00	1.12	0.50	1.00	0.67
4.25	BCA425	4.25	1.00	1.12	0.50	1.00	0.70
4.50	BCA450	4.50	1.00	1.12	0.50	1.00	0.72
5.00	BCA500	5.00	1.00	1.12	0.50	1.00	0.78
5.50	BCA550	5.50	1.00	1.12	0.50	1.00	0.83
6.00	BCA600	6.00	1.00	1.12	0.50	1.00	0.88
7.00	BCA700	7.00	1.00	1.12	0.50	1.00	0.99
8.00	BCA800	8.00	1.00	1.12	0.50	1.00	1.10

Note: We reserve the right to change specifications and/or designs without prior notice or obligation.

Tolerances: 2 Pl. Dec. ± 0.060
 3 Pl. Dec. ± 0.030

Material: Carriage Bolt - 3/8-16 x 1.5 Grade 5 Zinc
 Band - 11 Gauge, C1008-1010 H.R.P.O
 Nut - Serrated Flanged

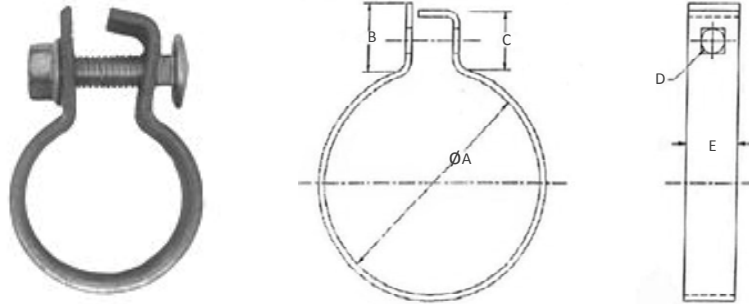
Standard Packs: ● Bulk / Unassembled ● Assembled / Bulk ● Packaged / Bulk / Individual Poly Bag
 ● Other Packs Available on Request

Optional Finishes: ● Plain ● Clear Zinc ● Yellow Zinc ● Black Zinc ● Black Paint ● Chrome ● To You Specifications

BCB Series - Strap Clamps

Made in U.S.A.

S Bend Connection with 90° Connection



Size (Inches)	Basic Part Number	ØA	B	C	D	E	Weight Each (Lbs.)
		Inches					
1.50	BCB150	1.50	1.12	-	-	-	0.36
1.63	BCB158	1.63	1.12	-	-	-	0.38
1.75	BCB175	1.75	1.12	-	-	-	0.39
1.88	BCB188	1.88	1.12	-	-	-	0.40
2.00	BCB200	2.00	1.12	0.75	0.50	1.00	0.42
2.13	BCB213	2.13	1.12	1.00	0.50	1.00	0.43
2.25	BCB225	2.25	1.12	1.00	0.50	1.00	0.44
2.50	BCB250	2.50	1.12	1.00	0.50	1.00	0.47
2.75	BCB275	2.75	1.12	1.00	0.50	1.00	0.50
3.00	BCB300	3.00	1.12	1.00	0.50	1.00	0.52
3.25	BCB325	3.25	1.12	1.00	0.50	1.00	0.55
3.50	BCB350	3.50	1.12	1.00	0.50	1.00	0.58
3.88	BCB388	3.88	1.12	1.00	0.50	1.00	0.60
4.00	BCB400	4.00	1.12	1.00	0.50	1.00	0.63
4.25	BCB425	4.25	1.12	1.00	0.50	1.00	0.66
4.50	BCB450	4.50	1.12	1.00	0.50	1.00	0.68
5.00	BCB500	5.00	1.12	1.00	0.50	1.00	0.73
5.50	BCB550	5.50	1.12	1.00	0.50	1.00	0.79
6.00	BCB600	6.00	1.12	1.00	0.50	1.00	0.84
7.00	BCB700	7.00	1.12	1.00	0.50	1.00	0.95
8.00	BCB800	8.00	1.12	1.00	0.50	1.00	1.06

Note: We reserve the right to change specifications and/or designs without prior notice or obligation.

Tolerances: 2 Pl. Dec. ± 0.060
3 Pl. Dec. ± 0.030

Material: Carriage Bolt - 3/8-16 x 1.5 Grade 5 Zinc
Band - 11 Gauge, C1008-1010 H.R.P.O
Nut - Serrated Flanged

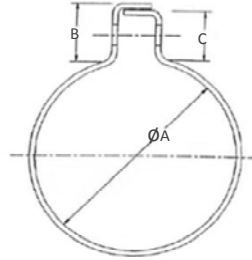
Standard Packs: ● Bulk / Unassembled ● Assembled / Bulk ● Packaged / Bulk / Individual Poly Bag
● Other Packs Available on Request

Optional Finishes: ● Plain ● Clear Zinc ● Yellow Zinc ● Black Zinc ● Black Paint ● Chrome ● To You Specifications

BCC Series - Strap Clamps

Made In U.S.A.

Double S-Bend Connection



Size (Inches)	Basic Part Number	ØA	B	C	D	E	Weight Each (Lbs.)
Inches							
1.25	BCC125	1.25	-	-	-	-	0.24
1.50	BCC150	1.50	1.12	1.00	0.50	1.00	0.38
1.63	BCC158	1.63	1.12	1.00	0.50	1.00	0.39
1.75	BCC175	1.75	1.12	1.00	0.50	1.00	0.40
1.88	BCC188	1.88	1.12	1.00	0.50	1.00	0.42
2.00	BCC200	2.00	1.12	1.00	0.50	1.00	0.43
2.13	BCC213	2.13	1.12	1.00	0.50	1.00	0.44
2.25	BCC225	2.25	1.12	1.00	0.50	1.00	0.46
2.50	BCC250	2.50	1.12	1.00	0.50	1.00	0.48
2.75	BCC275	2.75	1.12	1.00	0.50	1.00	0.51
3.00	BCC300	3.00	1.12	1.00	0.50	1.00	0.54
3.25	BCC325	3.25	1.12	1.00	0.50	1.00	0.56
3.50	BCC350	3.50	1.12	1.00	0.50	1.00	0.59
3.88	BCC388	3.88	1.12	1.00	0.50	1.00	0.62
4.00	BCC400	4.00	1.12	1.00	0.50	1.00	0.64
4.25	BCC425	4.25	1.12	1.00	0.50	1.00	0.67
4.50	BCC450	4.50	1.12	1.00	0.50	1.00	0.67
5.00	BCC500	5.00	1.12	1.00	0.50	1.00	0.75
5.50	BCC550	5.50	1.12	1.00	0.50	1.00	0.80
6.00	BCC600	6.00	1.12	1.00	0.50	1.00	0.86
7.00	BCC700	7.00	1.12	1.00	0.50	1.00	0.96
8.00	BCC800	8.00	1.12	1.00	0.50	1.00	1.07

Note: We reserve the right to change specifications and/or designs without prior notice or obligation.

Tolerances: 2 Pl. Dec. ± 0.060
3 Pl. Dec. ± 0.030

Material: Carriage Bolt - 3/8-16 x 1.5 Grade 5 Zinc
Band - 11 Gauge, C1008-1010 H.R.P.O
Nut - Serrated Flanged

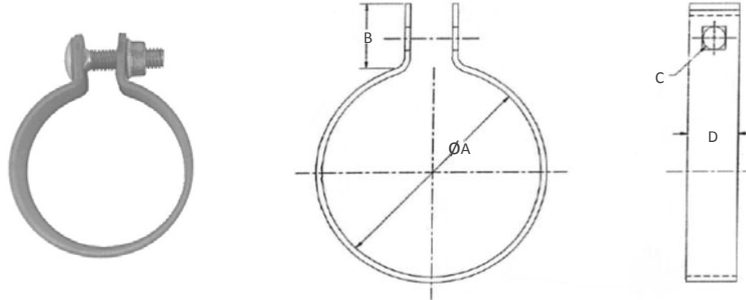
Standard Packs: ● Bulk / Unassembled ● Assembled / Bulk ● Packaged / Bulk / Individual Poly Bag
● Other Packs Available on Request

Optional Finishes: ● Plain ● Clear Zinc ● Yellow Zinc ● Black Zinc ● Black Paint ● Chrome ● To You Specifications

BCD Series - Strap Clamps

Made in U.S.A.

Double 90° End Connection



Size (Inches)	Basic Part Number	ØA	B	C	D		Weight Each (Lbs.)
Inches							
1.50	BCD150	1.50	-	-	1.00	-	0.35
1.63	BCD158	1.63	-	-	1.00	-	0.36
1.75	BCD175	1.75	-	-	1.00	-	0.38
1.88	BCD188	1.88	-	-	1.00	-	0.39
2.00	BCD200	2.00	1.00	0.50	1.00	-	0.41
2.13	BCD213	2.13	1.00	0.50	1.00	-	0.42
2.25	BCD225	2.25	1.00	0.50	1.00	-	0.43
2.50	BCD250	2.50	1.00	0.50	1.00	-	0.46
2.75	BCD275	2.75	1.00	0.50	1.00	-	0.49
3.00	BCD300	3.00	1.00	0.50	1.00	-	0.51
3.25	BCD325	3.25	1.00	0.50	1.00	-	0.54
3.50	BCD350	3.50	1.00	0.50	1.00	-	0.57
3.88	BCD388	3.88	1.00	0.50	1.00	-	0.59
4.00	BCD400	4.00	1.00	0.50	1.00	-	0.62
4.25	BCD425	4.25	1.00	0.50	1.00	-	0.64
4.50	BCD450	4.50	1.00	0.50	1.00	-	0.67
5.00	BCD500	5.00	1.00	0.50	1.00	-	0.72
5.50	BCD550	5.50	1.00	0.50	1.00	-	0.78
6.00	BCD600	6.00	1.00	0.50	1.00	-	0.83
7.00	BCD700	7.00	1.00	0.50	1.00	-	0.93
8.00	BCD800	8.00	1.00	0.50	1.00	-	1.05

Note: We reserve the right to change specifications and/or designs without prior notice or obligation.

Tolerances: 2 Pl. Dec. ± 0.060
3 Pl. Dec. ± 0.030

Material: Carriage Bolt - 3/8-16 x 1.5 Grade 5 Zinc
Band - 11 Gauge, C1008-1010 H.R.P.O
Nut - Serrated Flanged

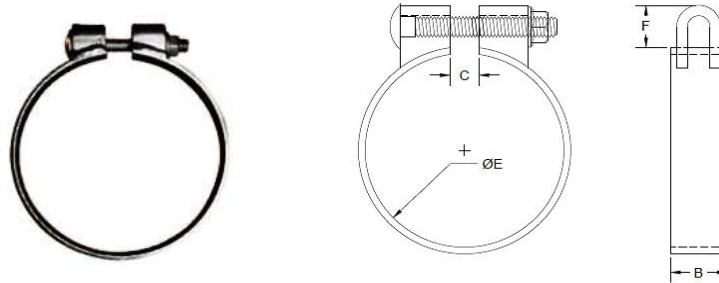
Standard Packs: ● Bulk / Unassembled ● Assembled / Bulk ● Packaged / Bulk / Individual Poly Bag
● Other Packs Available on Request

Optional Finishes: ● Plain ● Clear Zinc ● Yellow Zinc ● Black Zinc ● Black Paint ● Chrome ● To You Specifications

BCE Series Strap Clamps

Made in U.S.A.

Double Clip End Connection



Size (Inches)	Basic Part Number	B	C	ØE	E		Weight Each (Lbs.)
Inches							
2.00	BCE200	1.00	0.50	2.00	0.75	-	0.51
2.13	BCE213	1.00	0.50	2.13	0.75	-	0.52
2.25	BCE225	1.00	0.50	2.25	0.75	-	0.53
2.50	BCE250	1.00	0.50	2.50	0.75	-	0.57
2.75	BCE275	1.00	0.50	2.75	0.75	-	0.58
3.00	BCE300	1.00	0.50	3.00	0.75	-	0.60
3.25	BCE325	1.00	0.50	3.25	0.75	-	0.65
3.50	BCE350	1.00	0.50	3.50	0.75	-	0.67
3.88	BCE388	1.00	0.50	3.88	0.75	-	0.70
4.00	BCE400	1.00	0.50	4.00	0.75	-	0.72
4.12	BCE412	1.00	0.50	4.12	0.75	-	0.72
4.25	BCE425	1.00	0.50	4.25	0.75	-	0.73
4.50	BCE450	1.00	0.50	4.50	0.75	-	0.78
5.00	BCE500	1.00	0.50	5.00	0.75	-	0.83
5.50	BCE550	1.00	0.50	5.50	0.75	-	0.90
6.00	BCE600	1.00	0.50	6.00	0.75	-	0.95
7.00	BCE700	1.00	0.50	7.00	0.75	-	1.04
8.00	BCE800	1.00	0.50	8.00	0.75	-	1.18

Note: We reserve the right to change specifications and/or designs without prior notice or obligation.

Tolerances: 2 Pl. Dec. ± 0.060
3 Pl. Dec. ± 0.030

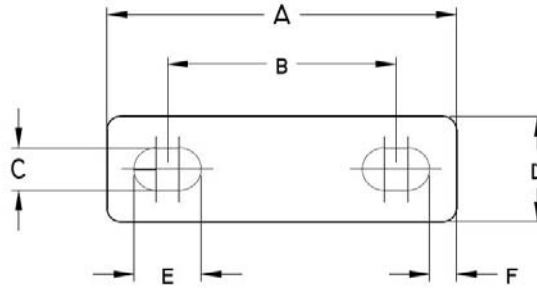
Material: Carriage Bolt - 3/8-16 Grade 5 Zinc
Band - 11 Gauge, C1008-1010 H.R.P.O
Nut - Serrated Flanged
Clip - 7 Gauge, C1018

Standard Packs: ● Bulk / Unassembled ● Assembled / Bulk ● Packaged / Bulk / Individual Poly Bag
● Other Packs Available on Request

Optional Finishes: ● Plain ● Clear Zinc ● Yellow Zinc ● Black Zinc ● Black Paint ● Chrome ● To You Specifications

MP Series - Mounting Plates

U-Bolt Mounting Plates, Slotted Holes, Zinc Plated



Made in the U.S.A

U-Bolt Diameter Range (Inches)			Part Number	A	B	C	D	E	F	Material Thickness	Shipping Wgt Ea. (Lbs)
Inches											
1.50	1.63	1.75	MP151750	3.250	2.125	0.406	1.000	0.625	0.250	0.120	-
1.88	2.00	2.25	MP182250	3.750	2.625	0.406	1.000	0.625	0.250	0.120	-
2.50	&	2.75	MP252750	4.250	3.125	0.406	1.000	0.625	0.250	0.120	-
3.00	&	3.25	MP303250	4.750	3.625	0.406	1.000	0.625	0.250	0.120	-
3.50	&	3.88	MP353780	5.250	4.125	0.406	1.000	0.625	0.250	0.120	-
4.00	&	4.44	MP404790	5.750	4.625	0.406	1.000	0.625	0.250	0.120	-

Note: We reserve the right to change specifications and / or designs without prior notice or obligation

Sold Only In 10 Packs

[Mounting Plates with 5/16"-18 U-Bolts - See PDF Page 23](#)

[Mounting Plates with 3/8"-16 U-Bolts - See PDF Page 24](#)

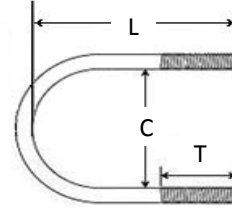
Tolerances:	2 Pl. Dec. ± 0.060 3 Pl. Dec. ± 0.030
Material:	C1008-1010-H.R.P.O.
Optional Material:	Quotes on Request
Standard Packs:	● Ten Pack Packaged / Poly Bag ● Other Packs Available on Request
Optional Finishes:	● To You Specifications

MPB Series - Mounting Plate with 5/16-18 U-Bolt

Mounting Plates with 5/16"- 18 U-Bolts and (2) Hex Nuts



- Heavy Duty Mounting Plate
- 5/16-18 U-Bolt
- (2) 5/16-18 Hex Head Nuts



Made in the U.S.A

U-Bolt Diameter (Inches)	Part Number	Description	U-Bolt Specifications			Wgt. Each (Lbs.)
			C	L	T	
			Inches			
1.50	MPB150-5	MP15175 Mounting Plate & UB150-5	1.67	2.47	1.00	-
1.63	MPB163-5	MP15175 Mounting Plate & UB163-5	1.79	2.54	1.00	-
1.75	MPB175-5	MP15175 Mounting Plate & UB175-5	1.92	2.87	1.00	-
1.88	MPB188-5	MP18225 Mounting Plate & UB188-5	2.04	2.90	1.00	-
2.00	MPB200-5	MP18225 Mounting Plate & UB200-5	2.17	3.06	1.00	-
2.25	MPB225-5	MP18225 Mounting Plate & UB225-5	2.42	3.31	1.25	-
2.50	MPB250-5	MP25275 Mounting Plate & UB250-5	2.67	3.56	1.25	-
2.75	MPB275-5	MP25275 Mounting Plate & UB275-5	2.92	4.35	1.25	-
3.00	MPB300-5	MP30325 Mounting Plate & UB300-5	3.17	4.60	1.50	-

Note: We reserve the right to change specifications and / or designs without prior notice or obligation

[Mounting Plates Specifications - See PDF Page 22](#)

[Mounting Plates with 3/8"-16 U-Bolts - See PDF Page 24](#)

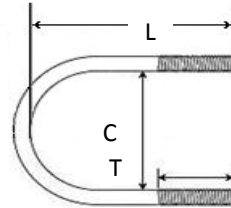
Tolerances:	See Page 23 for Mounting Plates See Page 27 for U-Bolts
Material:	Mounting Plates - C1008 H.R.P.O. U-Bolts C1018 Nuts - Hex Head
Optional Material:	Quoted on Request
Standard Packs:	● Ten Pack Packaged / Poly Bag ● Other Packs Available on Request
Optional Finishes:	● To You Specifications

MPB Series - Mounting Plate with 3/8-16 U-Bolt

Mounting Plates with 3/8"- 16 U-Bolts and (2) Hex Nuts



- Heavy Duty Mounting Plate
- 3/8-16 U-Bolt
- (2) 3/8-16 Hex Head Nuts



Made in the U.S.A

U-Bolt Diameter (Inches)	Part Number	Description	U-Bolt Specifications			Wgt. Each (Lbs.)
			C	L	T	
			Inches			
1.50	MPB150	MP15175 Mounting Plate & UB150	1.73	2.43	1.00	-
1.63	MPB163	MP15175 Mounting Plate & UB163	1.79	2.64	1.00	-
1.75	MPB175	MP15175 Mounting Plate & UB175	1.98	2.81	1.50	-
1.88	MPB188	MP18225 Mounting Plate & UB188	2.11	2.92	1.50	-
2.00	MPB200	MP18225 Mounting Plate & UB200	2.17	3.67	1.50	-
2.25	MPB225	MP18225 Mounting Plate & UB225	2.42	3.79	1.50	-
2.50	MPB250	MP25275 Mounting Plate & UB250	2.67	4.05	1.50	-
2.75	MPB275	MP25275 Mounting Plate & UB275	2.92	4.29	1.50	-
3.00	MPB300	MP30325 Mounting Plate & UB300	3.17	4.55	1.50	-
3.25	MPB325	MP30325 Mounting Plate & UB325	3.42	4.79	1.50	-
3.50	MPB350	MP35378 Mounting Plate & UB350	3.67	5.04	1.50	-
3.75	MPB388	MP35378 Mounting Plate & UB388	3.92	5.17	1.50	-
4.00	MPB400	MP40476 Mounting Plate & UB400	4.17	5.85	1.50	-
4.44	MPB476	MP40476 Mounting Plate & UB476	4.48	5.85	1.50	-

Note: We reserve the right to change specifications and / or designs without prior notice or obligation

[Mounting Plates Specifications - See PDF Page 22](#)

[Mounting Plates with 5/16"-18 U-Bolts - See PDF Page 23](#)

Tolerances:	See Page 23 for Mounting Plates See Page 27 for U-Bolts
Material:	Mounting Plates - C1008 H.R.P.O. U-Bolts C1018 Nuts - Hex Head
Optional Material:	Quoted on Request
Standard Packs:	● Ten Pack Packaged / Poly Bag ● Other Packs Available on Request
Optional Finishes:	● To You Specifications

Hardware: Hex Nuts / Flange Nuts / Lock Washers

Hex Nuts

Made in China



Size	Finish	Part Number	Wgt. Ea. Per CWT (Lbs.)
5/16 - 18	Plain	HNS0516	-
	Clear Zinc	HNS1516	-
	Yellow Zinc	HNSY516	-
	Black Zinc	HNSB516	-
	Stainless	HNSS516	-
3/8 - 16	Plain	HNS0138	-
	Clear Zinc	HNS1138	-
	Yellow Zinc	HNSY138	-
	Black Zinc	HNSB038	-
	Stainless	HNSS0038	-

Flange Nuts

Made in China



Size	Finish	Part Number	Wgt. Ea. Per CWT (Lbs.)
5/16 - 18	Plain	HNF0516	-
	Clear Zinc	HNF1516	-
	Yellow Zinc	HNFY516	-
	Black Zinc	HNFB516	-
	Stainless	HNFS0516	-
3/8 - 16	Plain	HNF0138	-
	Clear Zinc	HNF1138	-
	Yellow Zinc	HNFY138	-
	Black Zinc	HNFB138	-
	Stainless	HNFS0138	-

Lock Washers

Made in China



Size	Finish	Part Number	Wgt. Ea. Per CWT (Lbs.)
5/16 - 18	Plain	LWS0516	-
	Clear Zinc	LWS1516	-
	Yellow Zinc	LWSY516	-
	Black Zinc	LWSB516	-
	Stainless	LWSS0516	-
3/8 - 16	Plain	LWS0138	-
	Clear Zinc	LWS1138	-
	Yellow Zinc	LWSY138	-
	Black Zinc	LWSB038	-
	Stainless	LWSS038	-

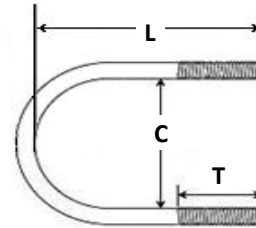
Note : We Reserve the right to change specifications and / or designs without prior notice or obligation.

08-2018

Round U-Bolts

1/4-20 Thread / 5/16-18 Thread / 3/8-16 Thread

Made in the U.S.A



Thread Diameter r	Size (Inches)	Basic Part Number	C	L	T	Wgt. Ea. (Lbs.)
			Inches			

1/4-20 Round U-Bolt ①	0.500	UBA050	0.590	1.45	0.75	-
	0.625	UBA063	0.670	1.45	0.75	-
	0.750	UBA075	0.850	1.45	0.75	-
	1.000	UBA100	1.120	1.50	0.75	-

5/16-18 Round U-Bolt ②	1.125	UB113-5	1.360	2.03	1.00	-
	1.250	UB125-5	1.480	2.12	1.00	-
	1.375	UB138-5	1.610	2.27	1.00	-
	1.500	UB150-5	1.670	2.47	1.00	-
	1.625	UB163-5	1.790	2.54	1.00	-
	1.750	UB175-5	1.920	2.87	1.00	-
	1.875	UB188-5	2.040	2.90	1.00	-
	2.000	UB200-5	2.170	3.06	1.00	-
	2.125	UB213-5	2.230	3.12	1.00	-
	2.250	UB225-5	2.420	3.31	1.25	-
	2.500	UB250-5	2.670	3.56	1.25	-
	2.750	UB275-5	2.920	4.35	1.25	-
	3.000	UB300-5	3.170	4.60	1.50	-

Thread Diameter r	Size (Inches)	Basic Part Number	C	L	T	Wgt. Ea. (Lbs.)
			Inches			

3/8-16 Round U-Bolt ③	1.50	UB150	1.73	2.43	1.00	-
	1.63	UB163	1.79	2.64	1.00	-
	1.75	UB175	1.98	2.81	1.50	-
	1.88	UB188	2.11	2.92	1.50	-
	2.00	UB200	2.17	3.67	1.50	-
	2.13	UB213	2.30	3.72	1.50	-
	2.25	UB225	2.42	3.79	1.50	-
	2.50	UB250	2.67	4.05	1.50	-
	2.75	UB275	2.92	4.29	1.50	-
	3.00	UB300	3.17	4.54	1.50	-
	3.25	UB325	3.42	4.79	1.50	-
	3.50	UB350	3.67	5.04	1.50	-
	3.88	UB378	3.92	5.17	1.50	-
	4.00	UB400	4.17	5.85	1.50	-
	4.44	UB476	4.48	5.85	1.50	-
	4.50	UB450	4.67	6.17	1.50	-
	5.00	UB500	5.17	6.79	1.50	-
	5.50	UB550	5.67	7.10	1.50	-
	6.00	UB600	6.17	7.48	1.50	-
	7.00	UB700	7.17	8.53	1.50	-
	8.00	UB800	8.17	9.69	1.75	-

Note: We reserve the right to change specifications and/or designs without prior notice or obligation.

- ① 1/4-20 Round U-Bolts are standard with AC Series Clamps
- ② 5/16-18 Round U-Bolts are standard with PC Series Clamps
- ③ 3/8-16 Round U-Bolts are standard with the U, UDO and UD Series Clamps

Tolerances: 2 Pl. Dec. ± 0.060
3 Pl. Dec. ± 0.030

Material: C1018 - 1/4-20 UNC-2A Threads
C1018 - 5/16-18 UNC-2A Threads
C1018 - 3/8-16 UNC-2A Threads

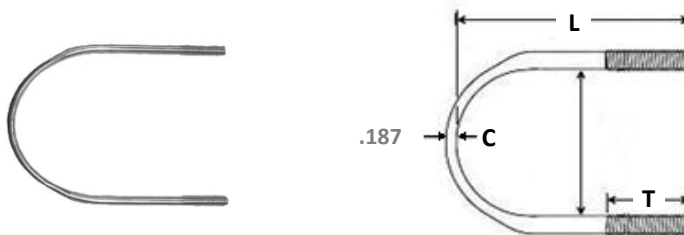
Optional Material: ●Stainless Steel ●Other Available on Request

Standard Packs: ●Bulk ●Other Available on Request

Optional Finishes: ●Plain ●Clear Zinc ●Yellow Zinc ●Black Zinc ●Black Paint ●Chrome ●To You Specifications

Flat / Coined U-Bolts 3/8-16 Thread

Made in the U.S.A



Thread Diameter	Size (Inches)	Basic Part Number	C	L	T	Wgt. Ea. (Lbs.)
			Inches			
3/8-16 Round U-Bolt ①	2.00	UBF200	2.17	3.81	1.50	-
	2.25	UBF225	2.42	3.94	1.50	-
	2.50	UBF250	2.67	4.19	1.50	-
	2.75	UBF275	2.92	4.36	1.50	-
	3.00	UBF300	3.17	4.54	1.50	-
	3.25	UBF325	3.42	4.79	1.50	-
	3.50	UBF350	3.67	5.04	1.50	-
	4.00	UBF400	4.17	5.85	1.75	-
	4.50	UBF450	4.67	6.31	1.50	-
	5.00	UBF500	5.17	6.79	1.75	-
	5.50	UBF550	5.67	7.10	1.50	-
	6.00	UBF600	6.17	7.71	1.50	-
	7.00	UBF700	7.17	8.83	1.50	-
	8.00	UBF800	8.17	9.69	1.50	-

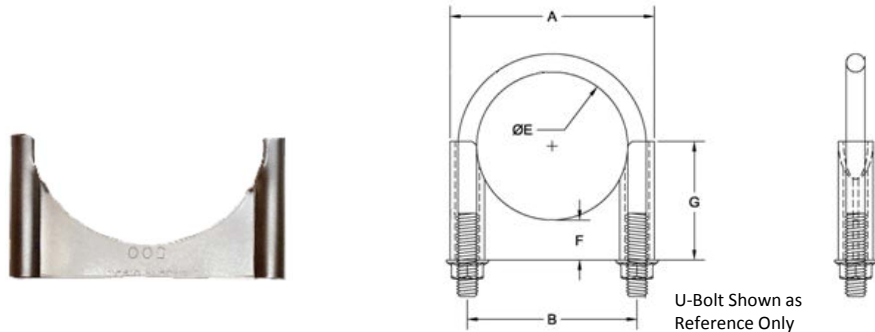
Note: We reserve the right to change specifications and/or designs without prior notice or obligation.

① 3/8-16 Flat U-Bolts are standard with UF, UFDO, UFD and AUF Series Clamps

Tolerances:	2 Pl. Dec. ± 0.060 3 Pl. Dec. ± 0.030
Material:	C1018 - 1/4-20 UNC-2A Threads C1018 - 5/16-18 UNC-2A Threads C1018 - 3/8-16 UNC-2A Threads
Optional Material:	●Stainless Steel ●Other Available on Request
Standard Packs:	●Bulk ●Other Packs Available on Request
Optional Finishes:	●Plain ●Clear Zinc ●Yellow Zinc ●Black Zinc ●Chrome ●To Your Specifications

Heavy Duty Guillotine Saddles

Made in the U.S.A



Size (Inches)	Basic Part Number	A	B	ØE	F	G	Saddle Material Gauge	Weight Each (Lbs.)
Inches								
2.00	S200	3.10	2.50	2.17	0.69	1.89	13	-
2.25	S225	3.35	2.75	2.42	0.69	2.00	13	-
2.50	S250	3.61	3.00	2.67	0.72	2.14	13	-
2.75	S275	3.86	3.25	2.92	0.69	2.25	13	-
3.00	S300	4.11	3.50	3.17	0.66	2.37	13	-
3.25	S325	4.34	3.75	3.42	0.69	2.50	13	-
3.50	S350	4.61	4.00	3.67	0.68	2.69	13	-
3.88	S378	4.91	4.25	3.92	0.69	2.75	11	-
4.00	S400	5.14	4.50	4.17	0.70	2.91	13	-
4.38	S476	5.49	4.81	4.48	0.87	3.24	11	-
4.50	S450	5.61	5.00	4.67	0.73	3.22	11	-
5.00	S500	6.19	5.50	5.17	0.78	3.37	11	-
5.50	S550	6.67	6.00	5.67	0.67	2.49	11	-
6.00	S600	7.18	6.50	6.17	0.80	2.62	11	-

Note: We reserve the right to change specifications and/or designs without prior notice or obligation.

HD Guillotine saddles are used with U and UF Series Clamps

Tolerances: 2 Pl. Dec. ± 0.060
3 Pl. Dec. ± 0.030

Material: C1008-1010-H.R.P.O.

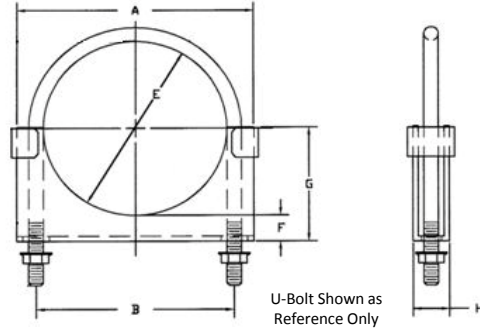
Optional Material: ●Stainless Steel

Standard Packs: ●Bulk ●Other Packs Available on Request

Optional Finishes: ●Plain ●Clear Zinc ●Yellow Zinc ●Black Zinc ●Black Paint ●Chrome ●To You Specifications

Heavy Duty Double Edge, Closed End, Saddles

Made in the U.S.A



Size (Inches)	Basic Part Number	A	B	øE	F	G	H	Saddle Material Gauge	Wgt. Ea. (Lbs.)
		Inches							
3.00	SD300	4.38	3.50	3.17	0.30	1.90	0.82	11	-
3.25	SD325	4.50	3.75	3.42	0.41	2.12	0.82	11	-
3.50	SD350	4.88	4.00	3.67	0.56	2.40	0.82	11	-
4.00	SD400	5.38	4.50	4.17	0.53	2.50	0.83	11	-
4.50	SD450	6.12	5.00	4.37	0.72	3.02	0.83	11	-
5.00	SD500	6.37	5.50	5.17	0.53	3.12	0.83	11	-
5.50	SD550	7.25	6.00	5.67	0.58	3.32	1.00	11	-
6.00	SD600	7.75	6.50	6.17	0.58	3.68	1.00	11	-

Note: We reserve the right to change specifications and/or designs without prior notice or obligation.

HD Double Edge, Closed End Saddles are used with UD and UFD Series Clamps

Tolerances: 2 Pl. Dec. ± 0.060
3 Pl. Dec. ± 0.030

Material: C1008-1010-H.R.P.O.

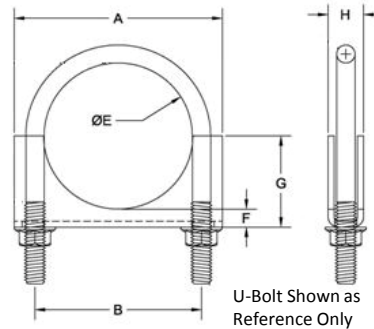
Optional Material: ●Stainless Steel

Standard Packs: ●Bulk ●Other Packs Available on Request

Optional Finishes: ●Plain ●Clear Zinc ●Yellow Zinc ●Black Zinc ●Black Paint ●Chrome ●To You Specifications

Heavy Duty Double Edge, Open End, Saddles

Made in the U.S.A



Size (Inches)	Basic Part Number	A	B	ØE	F	G	H	Saddle Material Gauge	Wgt. Ea. (Lbs.)
Inches									
0.50	SAC050	1.56	0.81	0.59	0.33	0.62	0.46	11	-
0.63	SAC063	1.56	1.00	0.67	0.29	0.62	0.46	11	-
0.75	SAC075	1.56	1.08	0.85	0.20	0.62	0.40	11	-
1.00	SAC100	1.82	1.34	1.12	0.20	0.62	0.46	11	-
1.50	SDO150	2.88	2.06	1.73	0.31	1.17	0.80	13	-
1.63	SDO163	2.88	2.12	1.79	0.31	1.17	0.80	13	-
1.75	SDO175	3.06	2.31	1.98	0.33	1.30	0.64	13	-
1.88	SDO188	3.19	2.44	2.11	0.31	1.36	0.64	13	-
2.00	SDO200	3.25	2.50	2.17	0.31	1.42	0.64	13	-
2.13	SDO213	3.50	2.68	2.30	0.37	1.54	0.64	13	-
2.25	SDO225	3.50	2.75	2.42	0.32	1.55	0.64	13	-
2.50	SDO250	3.75	3.00	2.67	0.33	1.68	0.64	13	-
2.75	SDO275	4.13	3.25	2.92	0.32	1.79	0.82	13	-
3.00	SDO300	4.38	3.50	3.17	0.30	1.90	0.82	13	-
3.25	SDO325	4.50	3.75	3.42	0.41	2.13	0.82	13	-
3.50	SDO350	4.88	4.00	3.67	0.56	2.40	0.82	13	-
4.00	SDO400	5.38	4.50	4.17	0.53	2.50	0.83	13	-
4.50	SDO450	6.11	5.00	4.67	0.65	2.86	0.83	13	-
5.00	SDO500	6.37	5.50	5.17	0.53	3.12	0.83	13	-
5.50	SDO550	7.25	6.00	5.67	0.58	3.32	1.00	13	-
6.00	SDO600	7.75	6.50	6.17	0.60	3.68	1.00	13	-

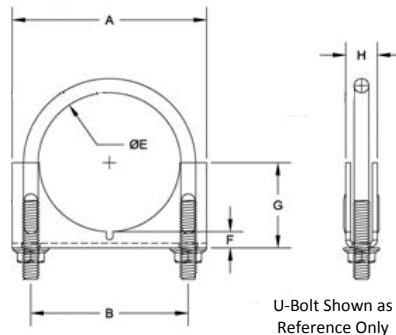
Note: We reserve the right to change specifications and/or designs without prior notice or obligation.

HD Double Edge, Open End saddles are used with UDO and UFDO Series Clamps

Tolerances:	2 Pl. Dec. ± 0.060 3 Pl. Dec. ± 0.030
Material:	C1008-1010-H.R.P.O. - 13 Gauge, except where noted
Optional Material:	●Stainless Steel
Standard Packs:	●Bulk ●Other Packs Available on Request
Optional Finishes:	●Plain ●Clear Zinc ●Yellow Zinc ●Black Zinc ●Black Paint ●Chrome ●To Your Request

Standard Duty, Double Edge, Open End, Saddles

Made in the U.S.A



Size (Inches)	Basic Part Number	A	B	ØE	F	G	H	Saddle Material Gauge	Wgt. Ea. (Lbs.)
Inches									
‡ 1.13	PCS113	2.31	1.63	1.36	0.26	0.93	0.56	13	-
‡ 1.25	PCS125	2.44	1.75	1.48	0.26	0.99	0.56	13	-
‡ 1.38	PCS138	2.56	1.88	1.61	0.26	1.05	0.56	13	-
1.50	PCS150	2.69	1.94	1.67	0.34	1.16	0.59	13	-
1.63	PCS163	2.88	2.06	1.79	0.30	1.19	0.59	13	-
1.75	PCS175	2.88	2.19	1.92	0.31	1.25	0.59	13	-
1.88	PCS188	3.00	2.31	2.04	0.31	1.31	0.59	13	-
2.00	PCS200	3.13	2.44	2.17	0.27	1.36	0.59	13	-
2.13	PCS213	3.38	2.56	2.23	0.38	1.51	0.59	13	-
2.25	PCS225	3.38	2.69	2.42	0.31	1.50	0.82	13	-
2.50	PCS250	3.63	2.94	2.67	0.31	1.63	0.82	13	-

‡ No notch or stiffing ribs on these items

Note: We reserve the right to change specifications and/or designs without prior notice or obligation.

SD Double Edge, Open End saddles are used with PC Series Clamps

Tolerances: 2 Pl. Dec. ± 0.060
3 Pl. Dec. ± 0.030

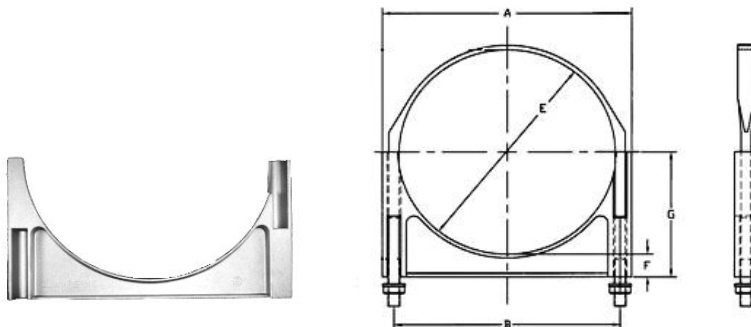
Material: C1008-1010-H.R.P.O.

Standard Packs: ●Bulk ●Other Packs Available on Request

Optional Finishes: ●Plain ●Clear Zinc ●Yellow Zinc ●Black Zinc ●Black Paint ●Chrome ●To You Specifications

Cast Aluminum Saddles - 7" & 8"

Made in the U.S.A



U-Bolt Shown as
Reference Only

Size (Inches)	Basic Part Number	A	B	ØE	F	G	H	Wgt. Ea. (Lbs.)
Inches								
7.00	S700	8.12	7.50	8.83	0.75	4.25	0.75	-
8.00	S800	9.12	8.50	9.69	0.75	4.25	0.75	-

Note: We reserve the right to change specifications and/or designs without prior notice or obligation.

7" & 8" Aluminum Saddles are used with AUF Series Clamps

Tolerances: 2 Pl. Dec. ± 0.060
3 Pl. Dec. ± 0.030

Material: Cast Aluminum

Standard Packs: ●Bulk ●Other Packs Available on Request

Optional Finishes: N/A

Knurling

This product feature is available for flat/coined U-bolts.
 The knurling is on the inside radius of the flat/coined U-Bolt.
[Click here for more information.](#)

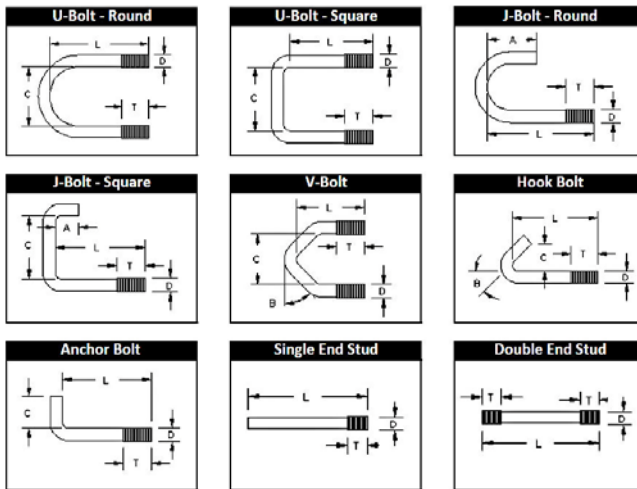
Custom Bent Bolts



Clamps Incorporated specialize in the custom manufacturing of a variety of bent bolts, such as J-Bolts, L-Hooks, and U-Bolts. We offer a wide range of applied finishes, including adhesives, nickel plating, PTFE coating and chrome. Working with 304 and 409 stainless steel, as well as mild steel 1008 to 1541, we can accommodate threads measuring from 0.25 to 0.625 inches and metric sizes of M6-M16.

Upholding a (+/-) 0.01 inch precision tolerance and built in a heat and corrosion resistant operating environment, our custom manufactured bent bolts meet high industry standards and have served the needs of diverse industries.

Contact us to learn more about our custom manufactured bent bolts.

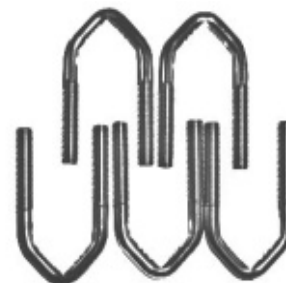


U.S. Standard (inches)	Metric (mm)
Thread Size	
10 - 32	
1/4 - 20	
1/4 - 28	
5/16 - 18	M 5 X 0.08
5/16 - 24	M 6 X 1.00
3/8 - 16	M 8 X 1.25
3/8 - 24	M10 X 1.50
7/16 - 14	M 12 X 1.75
7/16 - 20	M 16 X 2.00
1/2 - 13	
1/2 - 20	
9/16 - 12	
5/8 - 11	

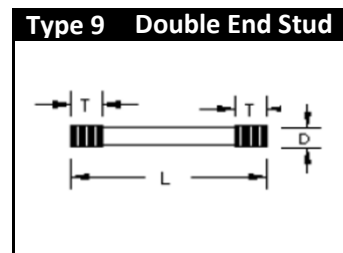
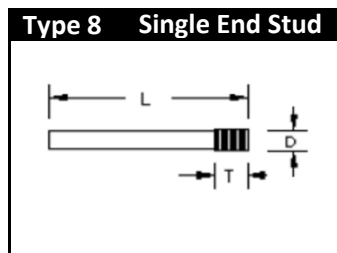
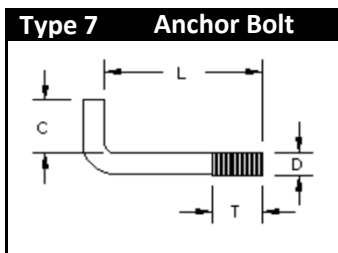
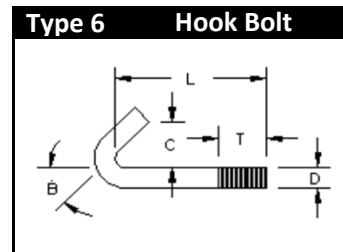
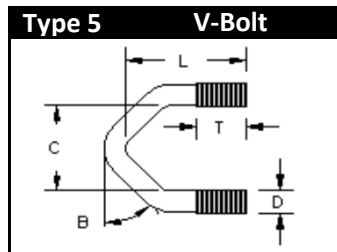
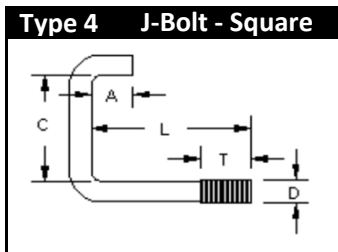
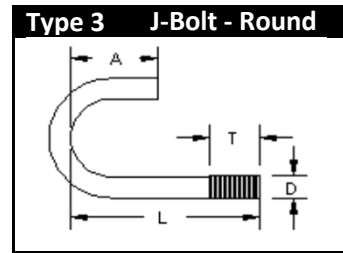
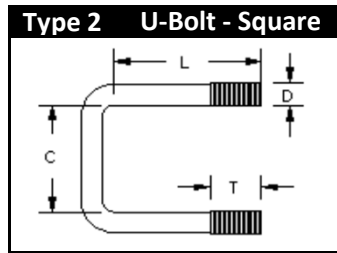
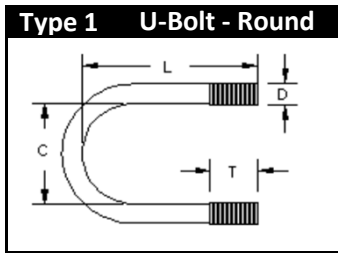


Bent Bolt Type:

- Flat J-Hook
- J-Bolt (Round)
- L-Hook
- U-Bolt (Round)
- V-Bolt
- Hook
- J-Bolt (Square)
- Straight
- U-Bolt (Square)
- Coined



Custom Bent / Threaded Bolts



Please
Note if
Metric

Bolt Type: _____

A: _____

Part Number: _____

B: _____

Material: _____

C: _____

Quantity: _____

D: _____

Finish: See PDF Page 36 for Options

L: _____

T: _____

Company Name: _____

City, State: _____

Your Name: _____

Ph / : _____

Fx / : _____

Em / : _____

Custom Brackets, Hangers & Stampings

Brackets & Hanger

Clamps Incorporated can produce brackets and hangers in many styles such as:

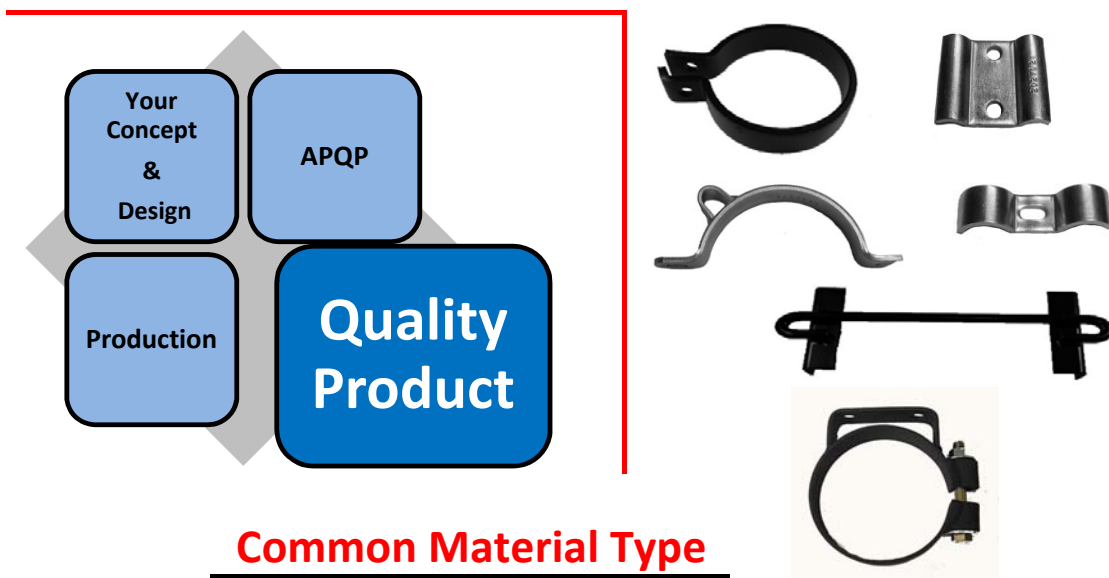
- Angle Brackets and Hangers
- Mounting Brackets and Hanger
- Flat Brackets and Hangers
- Clamp type Brackets and Hangers

Progressive and Single Die Stampings

Equipped with a 75 to 400 ton press rating and upholding a (\pm) 0.015 inch precision tolerance, our progressive and single die stamping services always meet high industry standards.

We have the ability to stamp parts up to 0.3125 inches thick. Our progressive and single die stamping services can be applied to several bracket type products. In addition to our die stamping operations, we also invite you to inquire about our additional service options, which include assembly, manufacturability consulting, power coating, plating, and welding.

Contact us to learn more about our advanced, custom progressive and single die stamping services.



Common Material Type

Material	Standards
High Carbon	1050, 1055, 1060, 1070
Low Carbon	1008, 1008-125
Stainless	300, 301, 302, 400, 430

MATERIALS TO YOUR SPECIFICATIONS

Common Finish Types

Description	Advantage	SS Corrosion Rating
Plain	Cost Effective	N/A
Zinc, Clear Chromate	Cost Effective, Moderate SS	96 Hours
Zinc, Yellow Chromate	Cost Effective, Moderate SS	72 Hours

FINISHES TO YOUR SPECIFICATIONS

Product Options: Material / Package / Finish / Bar Code

See How To Order Page 37

Material / Finishes

Plain / Machine Finish

Stainless Steel (304)

Clear Zinc

Yellow Zinc

Black Zinc (On Request)

Black Paint

Chrome Plating

To Your Specifications

Package Options

Bulk Pack

Assembled

Packaged

Ten Packs - Poly Bag

Fifty Packs - Poly Bag

Combination of the Above

To Your Specifications

Bar Code Options

Code 39

UPC (Customer Supplied)

GS1 (Customer Supplied)

Code 128

Code 93

To Your Specifications

Products Options

Product Options

How To Order

The examples shown below are the more popular package, finish and material options available. Please refer to "[Product Options](#)" page in this catalog for a complete list of these options.

Clamps Incorporated price sheet includes complete instructions on "How to Order" with the suffix code for finishes, packaging and material option.

Customer defined options are available on request.

Basic Part Number Example:		UXXX
Plain Finish	Assembled / U-Bolt, Saddle & (2) Serrated Flange Nuts	
	Bulk Pack / Plain Finish	UXXXA
	Ten Pack Box - U-Bolt, Saddle & (2) Serrated Flange Nuts	
	Ten Pack Box, Individual Poly Bag / Plain Finish	UXXXT
Clear Zinc Finish	Assembled / U-Bolt, Saddle & (2) Serrated Flange Nuts	
	Bulk Pack / Assembled / Clear Zinc Finish	UXXXA1
	Fifty Pack Box / U-Bolt, Saddle & (2) Serrated Flange Nuts	
	Fifty Pack Box, Individual Poly Bag / Clear Zinc Finish	UXXXF1
Yellow Zinc Finish	Packaged Bulk / U-Bolt, Saddle & (2) Serrated Flange Nuts	
	Individual Poly Bag, Bulk Pack / Yellow Zinc Finish	UXXXKBYD
	Ten Pack Box - U-Bolt, Saddle & (2) Serrated Flange Nuts	
	Ten Pack Box, Individual Poly Bag / Yellow Zinc Finish	UXXXTYD
Chrome Plated Finish	Ten Pack Box - U-Bolt, Saddle & (2) Serrated Flange Nuts	
	Ten Pack Box, Individual Poly Bag / Yellow Zinc Finish	UXXXT2
	Fifty Pack Box / U-Bolt, Saddle & (2) Serrated Flange Nuts	
	Fifty Pack Box, Individual Poly Bag / Clear Zinc Finish	UXXXF2
Stainless Steel Material	Bulk - U-Bolt, Saddle & (2) Serrated Flange Nuts	
	Bulk Pack / Stainless Steel Material	UXXXSSB
	Packaged Bulk - U-Bolt, Saddle & (2) Serrated Flange Nuts	
	Individual Poly Bag, Bulk Pack	UXXXKBSS

**Our Customer Service Can Assist You In
Ordering The Correct Part Number**

Sellers Terms and Conditions of Sale

Page 1 of 4

All orders are expressly conditioned on Buyer's assent to Clamps Incorporated (Seller's) sales and credit terms only and not to terms and conditions appearing on Buyer's purchase order or contract. Buyer waives any right to object to these terms and conditions. Buyer's assent to these terms and conditions shall be evidenced by acceptance of any shipment. Seller's failure to object to terms contained in any communication from Buyer shall not be deemed to be a waiver of these terms and conditions.

Said terms and conditions are as follows:

Net Prices:

All prices are subject to change without notice. This price list supersedes and cancels all previous price lists. Prices are F.O.B. shipping point.

Minimum Order:

Invoice/Open account minimum order is \$100.00 net. Invoice/Open account orders less than \$100.00 net will not be accepted. Credit card minimum order is \$50.00. Accepted credit/debit cards are Visa, Master Card, Discover and American Express.

Telephone Calls:

Seller will accept only paid phone calls. Seller will NOT accept responsibility for any errors made in telephoned or oral instructions. To avoid any errors, a confirming purchase order must be mailed, faxed or e-mailed to Seller.

Terms of Payment:

Terms are 2% - ten (10) days, net thirty (30) days. A 1-1/2% monthly carrying charge will be added to all past due accounts, beginning the thirty-first (31st) day from date of invoice. Shipments can be made C.O.D. or cash in advance prior to credit approval. All invoices are payable in U.S. funds. Please pay from invoice.

Cancellations:

Buyer may not cancel any order without Seller's prior written approval and will be subject to charges for expenses incurred and work executed by Seller or our suppliers.

Shipment:

Shipment will be made F.O.B. shipping point at which time risk of loss shall pass to Buyer. Seller reserves the right to select means and route of shipment if specific instructions are not included with order, and Buyer waives any right it may have to notification of shipment. Seller may in its discretion make partial shipments. Seller will endeavor to ship merchandise within the specified time; however, Seller does not guaranty delivery.

Risk of Loss and Deliver Title:

Liability for loss or damage passes to Buyer on delivery. Delivery of goods by the Seller to the carrier at the shipping point constitutes delivery to Buyer. Title to goods shall pass to Buyer subject to Seller's right of stoppage in transit to secure payment of the purchase price for the goods.

Sellers Terms and Conditions of Sale

Page 2 of 4

Force Majeure:

Seller shall not be liable for any delay in performance or for non-performance, in whole or in part caused by the occurrence of any contingency beyond the control of Seller or Seller's suppliers, including but not limited to, war, sabotage, insurrection, riot or other act of civil disobedience, act of a public enemy, failure or delay in transportation, act of any government or agency thereof affecting the terms of this contract, judicial action, labor dispute, accident, fire, explosion, flood, storm or other Act of God, shortage of labor, fuel, raw materials, tools, dies or equipment or technical failure. Any such delays shall excuse Seller from performance, and Seller's time for performance shall be extended for the period of delays and for a reasonable time thereafter. In no event shall Seller be liable for direct, indirect, special, incidental or consequential damages for any delay or non-performance.

Multiple Shipments - Separate Contracts:

If the contract provides for, or if Seller elects to make, multiple shipments or deliveries, each such shipment or delivery shall be construed as a separate sale. Buyer agrees to accept and pay for each such shipment or delivery. Should Buyer fail to accept and pay for each shipment or delivery, Seller may without prejudice to any other lawful remedy defer further shipments or deliveries until acceptance thereof by Buyer or until payment is made by Buyer. Seller may at its sole discretion without liability whatsoever terminate this contract as to any unaccepted or undelivered portion thereof, as well as any other outstanding contract with Buyer. Buyer shall be responsible for any expenses and losses sustained by Seller by so doing.

Shortages:

Shortages or errors made in filling an order must be reported to Seller within ten (10) days of delivery or Seller will not honor them. Before claiming a shortage, Buyer must verify that no containers were received in damaged condition.

Loss or Damage:

For orders shipped F.O.B. origin freight collect, any claims must be filed by the consignee direct with the carrier. Under no circumstances should freight be refused by Buyer. Buyer is to verify that the correct number of pieces is received prior to signing the freight bill. Buyer must make note on the freight bill any visible damage to pieces received.

Claims and Allowances:

Seller shall not be liable for manufacturing defects for goods which pass without objection in the trade under the contract description or for goods which are of fair average quality. Claims of any kind or nature, except for latent defects, are specifically barred unless made in writing by registered mail within sixty (60) days after delivery to Buyer. Seller's limit of liability for defective merchandise shall be the difference in value on contract date of delivery between goods specified and goods actually delivered. The limit of Seller's liability for non-delivery shall be the difference, if any, between the contract price and the fair market price on the contract date of delivery of the goods to be delivered. In no event shall Seller be liable for direct, indirect, special, incidental or consequential damages for any delay or non-performance.

Sellers Terms and Conditions of Sale

Page 3 of 4

Returned Goods:

All returned goods must have an authorization number assigned by Seller. Items returned for credit will be subject to a 20% restocking charge and must be returned FREIGHT PREPAID. No items for return will be accepted beyond twelve (12) months from date of shipment, or if an overstock situation exists at the time of request. Customer must supply Seller with invoice number and purchase order number from which shipment was made. ONLY CURRENT MODEL PARTS IN SALEABLE CONDITION WILL BE ACCEPTED.

Overruns:

Overruns on custom and/or special order merchandise up to 5% of the quantity ordered shall constitute an acceptable delivery.

Termination:

Seller may cancel this contract in the event of Buyer's breach. Seller may also cancel this contract on occurrence of any of the following: insolvency of Buyer; filing by Buyer of a voluntary petition of bankruptcy; filing of an involuntary petition to have Buyer declared bankrupt; appointment of a receiver or trustee for Buyer; execution by Buyer of an assignment or composition arrangement for the benefit of creditors; filing of a voluntary or involuntary petition for corporate reorganization of Buyer; or initiation by any party for any other proceeding involving Buyer as debtor under the Bankruptcy Act, as amended. In the event of any cancellation under this paragraph, Seller without prejudice to any other rights available to it for breach of this contract shall have the right: (i) to refuse to deliver any additional goods; (ii) to recover from Buyer the contract price of all goods delivered and for freight, storage, handling and other expenses incurred by Seller; or (iii) to sell elsewhere and charge Buyer with any resultant damages.

Warranty - General:

All products manufactured by Clamps Incorporated are warranted to be free from defects in materials and/or workmanship for a period of 30 days from the date of receipt by the original purchaser. If you believe any Clamps Incorporated product you have purchased has a defect in material and/or workmanship, or has failed during normal use within the warranty period, please contact Clamps Incorporated at (800) 837-0141 for assistance. If product repair or replacement is necessary, the Customer will be solely responsible for all shipping charges, freight, and insurance required for transit whether or not the product is covered by this warranty, unless otherwise determined by the factory. All shipments of repaired or replaced products by Clamps Incorporated will be F.O.B. at the Clamps Incorporated factory in Toledo, Ohio 43612 U.S.A., unless otherwise determined by the factory. This warranty is limited to factory defects and excludes items subject to normal wear.

Warranty Limitations:

This warranty does not apply to any defects resulting from any customer actions, such as mishandling, improper installation, operation outside of design limits, misapplication, improper repair, or unauthorized modifications. No other warranties are expressed or implied. Clamps Incorporated specifically disclaims any implied warranties of merchantability or fitness for a specific purpose. Clamps, Incorporated's liability shall be limited to the actual purchase price of any defective product or products to which a claim is made, and shall in no event include the Customer's manufacturing costs, lost profits or goodwill, or any other direct, indirect, special, incidental or consequential damages whether based on contract, tort or customary variances from specifications.

Sellers Terms and Conditions of Sale

Page 4 of 4

Warranty - Limitation of Damages:

Clamps Incorporated's products are not intended for personal, family or household use, therefore, this warranty is extended only to commercial and/or industrial users, Products sold by Clamps Incorporated are not designed, intended or authorized for use in applications where the failure of the product could create a situation where catastrophic property damage, personal injury or death may occur. In the event that the Customer purchases or uses any Clamps, Incorporated products for any such unintended or unauthorized application, the Customer shall indemnify and hold harmless Clamps Incorporated and its officers, directors, employees, agents, affiliates, successors and assigns against all claims, costs, damages and expenses (including reasonable attorneys and expert witness fees) arising out of or in connection with, directly or indirectly, any claim for property damage, personal injury or death associated with such unintended or unauthorized use, even if such claim alleges that Clamps Incorporated was negligent regarding the design or manufacture of the subject product. Clamps Incorporated, 5960 American Rd. East, Toledo, OH, 43612, U.S.A., Ph / 419.729.2141, Fx / 419.729.5776.

Warranty Claim Procedure:

All warranty claims must be made within forty-five (45) days after receipt by original purchaser. Claims must be in writing and include a representative sample of the defective product, with the proof of purchase. All claims must be mailed to attention of the Warranty Department, Clamps Incorporated, 5960 American Road East, Toledo, OH 43612, U.S.A. Clamps Incorporated will promptly advise the user of their findings.

Patent Infringement:

If any merchandise shall be sold by Seller to meet Buyer's particular specifications or requirements and is not part of Seller's standard line offered to the trade generally in the ordinary course of Seller's business, Buyer agrees to indemnify, defend, protect and hold Seller harmless against any and all suits at law or equity and from any and all loss, damage, claims and demands for actual or alleged infringement of any United States or foreign patents, and to defend any suit which may be brought against Seller for any alleged infringement because of the sale of the merchandise ordered by Buyer. In the event Buyer fails to defend Seller, Buyer shall be responsible for all of Seller's attorney fees, costs of defense, expert witness fees and other litigation related expenses.

Attorney's Fees:

If Seller seeks to enforce any of the terms hereof due to Buyer's breach, Buyer shall pay Seller's reasonable attorney's fees and expenses.

Assignment:

This contract is binding upon and inures to the benefit of the parties and the successor and assigns of the entire business and goodwill of Seller or Buyer, but will not otherwise be assignable by Buyer; except that Seller may assign the proceeds of this contract. Nothing in this contract shall inure to the benefit of or be deemed to give rise to any rights in any third party.

For further information or questions, contact Clamps Incorporated:

Our normal sales desk hours are 6:00 a.m. - 4:30 p.m. EST, Monday through Thursday.

Clamps Incorporated

5960 American Road East, Toledo, OH 43612

Ph / 800.837-0141

Ph / 419.729.2141

Fx / 419.729.5776

Limited Warranty

Warranty - General:

All products manufactured by Clamps Incorporated are warranted to be free from defects in materials and/or workmanship for a period of 30 days from the date of receipt by the original purchaser. If you believe any Clamps Incorporated product you have purchased has a defect in material and/or workmanship, or has failed during normal use within the warranty period, please contact Clamps Incorporated at Ph / 419.729.2141 for assistance. If product repair or replacement is necessary, the Customer will be solely responsible for all shipping charges, freight, and insurance required for transit whether or not the product is covered by this warranty, unless otherwise determined by the factory. All shipments of repaired or replaced products by Clamps Incorporated will be F.O.B. at the Clamps Incorporated factory in Toledo, Ohio 43612 U.S.A., unless otherwise determined by the factory. This warranty is limited to factory defects and excludes items subject to normal wear.

Limitation of Warranty:

This warranty does not apply to any defects resulting from any customer actions, such as mishandling, improper installation, operation outside of design limits, misapplication, improper repair, or unauthorized modifications. No other warranties are expressed or implied. Clamps Incorporated specifically disclaims any implied warranties of merchantability or fitness for a specific purpose. Clamps Incorporated's liability shall be limited to the actual purchase price of any defective product or products to which a claim is made, and shall in no event include the Customer's manufacturing costs, lost profits or goodwill, or any other direct, indirect, special, incidental or consequential damages whether based on contract, tort or customary variances from specifications.

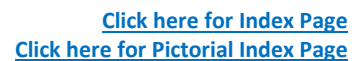
Conditions and Limitation of Damages:

Clamps Incorporated's products are not intended for personal, family or household use, therefore, this warranty is extended only to commercial and/or industrial users. Products sold by Clamps Incorporated are not designed, intended or authorized for use in applications where the failure of the product could create a situation where catastrophic property damage, personal injury or death may occur. In the event that the Customer purchases or uses any Clamps Incorporated products for any such unintended or unauthorized application, the Customer shall indemnify and hold harmless Clamps Incorporated and its officers, directors, employees, agents, affiliates, successors and assigns against all claims, costs, damages and expenses (including reasonable attorneys and expert witness fees) arising out of or in connection with, directly or indirectly, any claim for property damage, personal injury or death associated with such unintended or unauthorized use, even if such claim alleges that Clamps Incorporated was negligent regarding the design or manufacture of the subject product.

Warranty Claim Procedure:

All warranty claims must be made within forty-five (45) days after receipt by original purchaser. Claims must be in writing and include a representative sample of the defective product, with the proof of purchase. All claims must be mailed to attention of the Warranty Department, Clamps Incorporated, 5960 American Road East, Toledo, OH 43612, U.S.A., Ph / 419.729.2141, Fx / 419.729.5776. Clamps Incorporated will promptly advise the user of their findings.

Effective January 1990
Format Up-Dated 6-2012

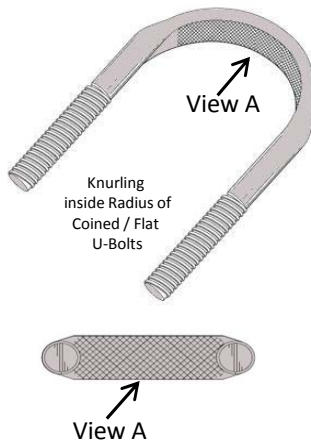
[illegible]

Your Notes for Printed Copy Only

Notes

Notes

Flat / Coined U-Bolts Knurling



Some of the Flat / Coined U-Bolts have knurling on the inside bend radius of coined / flat U-bolts. This is now available on most sizes of coined / flat U-bolt clamps. This knurling feature will provide:

- Stops the clamps from twisting
- Provides better gripping power
- Increases the pull-apart strength

This knurling is available on custom coined / flat U-bolts. The knurling feature does not change the part from a dimensional characteristics or the integrity of the product. There is no extra cost for this feature. It is available with all standard and customer request finishes.

Administration

[Click here for Index Page](#)
[Click here for Pictorial Index Page](#)

Title / Position	Name	Phone	Email
President / General Manager	Anthony "Nino" Carollo	419.729.2141 x 110	nino@clampsinc.com
Vice President / Quality Manager	Tom Shackelford	419.729.2141 x 109	shack@clampsinc.com
Office Manager	Jeanne Graham	419.729.2141 x 105	jeanne@clampsinc.com
Sales Manager	Jim McDonagh	419.729.2141 x 108	jimm@clampsinc.com
RFQ / Cost Estimator	Thad Thomas	419.729.2141 x 116	thad@clampsinc.com
Production Scheduler / Customer Service	Amy Wilkins	419.729.2141 x 101	awilkins@clampsinc.com
Customer Service Coordinator	Charlene Schumaker	419.729.2141 x 104	charlene@clampsinc.com
Shipping Manager	Kelly Smith	419.729.2141 x 107	kelly@clampsinc.com



[Click here for Index Page](#)
[Click here for Pictorial Index Page](#)

e-Catalog 08.2018.0

- > U-Bolt Clamps
 - > Band Clamps
 - > Strap Clamps
 - > Mounting Plates
 - > Mounting Plates w/U-Bolts
 - > Custom Bend Bolts
 - > Custom Brackets
 - > Custom Hangers
 - > Custom Stampings
 - > & More
-

Clamps Incorporated
5960 American Road East
Toledo, OH 43612

Ph / 800.837.0141
Ph / 419.729.2141
Fx / 419.729.5776

www.clampsinc.com

Quality. Integrity. Expertise. Reliability.
